



UK Health  
Security  
Agency

# COVID-19 vaccine surveillance report

## Week 3

20 January 2022

# Contents

Executive summary .....	3
Vaccine effectiveness .....	3
Population impact .....	3
Vaccine effectiveness .....	4
Effectiveness against symptomatic disease .....	4
Effectiveness against hospitalisation .....	9
Effectiveness against mortality .....	10
Effectiveness against infection .....	11
Effectiveness against transmission .....	11
Population impact .....	16
Vaccine coverage .....	16
Vaccination in immunosuppressed individuals .....	20
Vaccination in pregnancy .....	21
Vaccination status in cases, deaths and hospitalisations .....	30
Vaccine impact on proportion of population with antibodies to COVID-19.....	39
Summary of impact on hospitalisations, infections and mortality.....	46
References.....	47

## Executive summary

Four coronavirus (COVID-19) vaccines have now been approved for use in the UK. Rigorous clinical trials have been undertaken to understand the immune response, safety profile and efficacy of these vaccines as part of the regulatory process. Ongoing monitoring of the vaccines as they are rolled out in the population is important to continually ensure that clinical and public health guidance on the vaccination programme is built upon the best available evidence. UK Health Security Agency (UKHSA), formerly Public Health England (PHE), works closely with the Medicines and Healthcare Regulatory Agency (MHRA), NHS England, and other government, devolved administration and academic partners to monitor the COVID-19 vaccination programme. Details of the vaccine surveillance strategy are set on the page [COVID-19: vaccine surveillance strategy \(1\)](#). As with all vaccines, the safety of COVID-19 vaccines is continuously [being monitored by the MHRA](#). They conclude that overall, the benefits of COVID-19 vaccines outweigh any potential risks [\(2\)](#).

## Vaccine effectiveness

Several studies of vaccine effectiveness have been conducted in the UK against different COVID-19 variants. Vaccine effectiveness against symptomatic disease with the Omicron variant is substantially lower than against the Delta variant, with rapid waning. However, protection against hospitalisation remains high, particularly after 3 doses.

## Population impact

The impact of the vaccination programme on the population is assessed by taking into account vaccine coverage, evidence on vaccine effectiveness and the latest COVID-19 disease surveillance indicators.

Vaccine coverage tells us about the proportion of the population that have received 1, 2 and 3 doses of COVID-19 vaccines. By 16 January 2022, the overall vaccine uptake in England for dose 1 was 68.9% and for dose 2 was 63.6%. Overall vaccine uptake in England in people with at least 3 doses was 48.4%. In line with the programme rollout, coverage is highest in the oldest age groups.

We present data on COVID-19 cases, hospitalisations and deaths by vaccination status. **These raw data should not be used to estimate vaccine effectiveness** as the data does not take into account inherent biases present such as differences in risk, behaviour and testing in the vaccinated and unvaccinated populations. Vaccine effectiveness is measured in other ways as detailed in the [‘Vaccine Effectiveness’](#) section.

Based on antibody testing of blood donors, 98.7% of the adult population now have antibodies to COVID-19 from either infection or vaccination compared to 24.1% that have antibodies from infection alone.

## Vaccine effectiveness

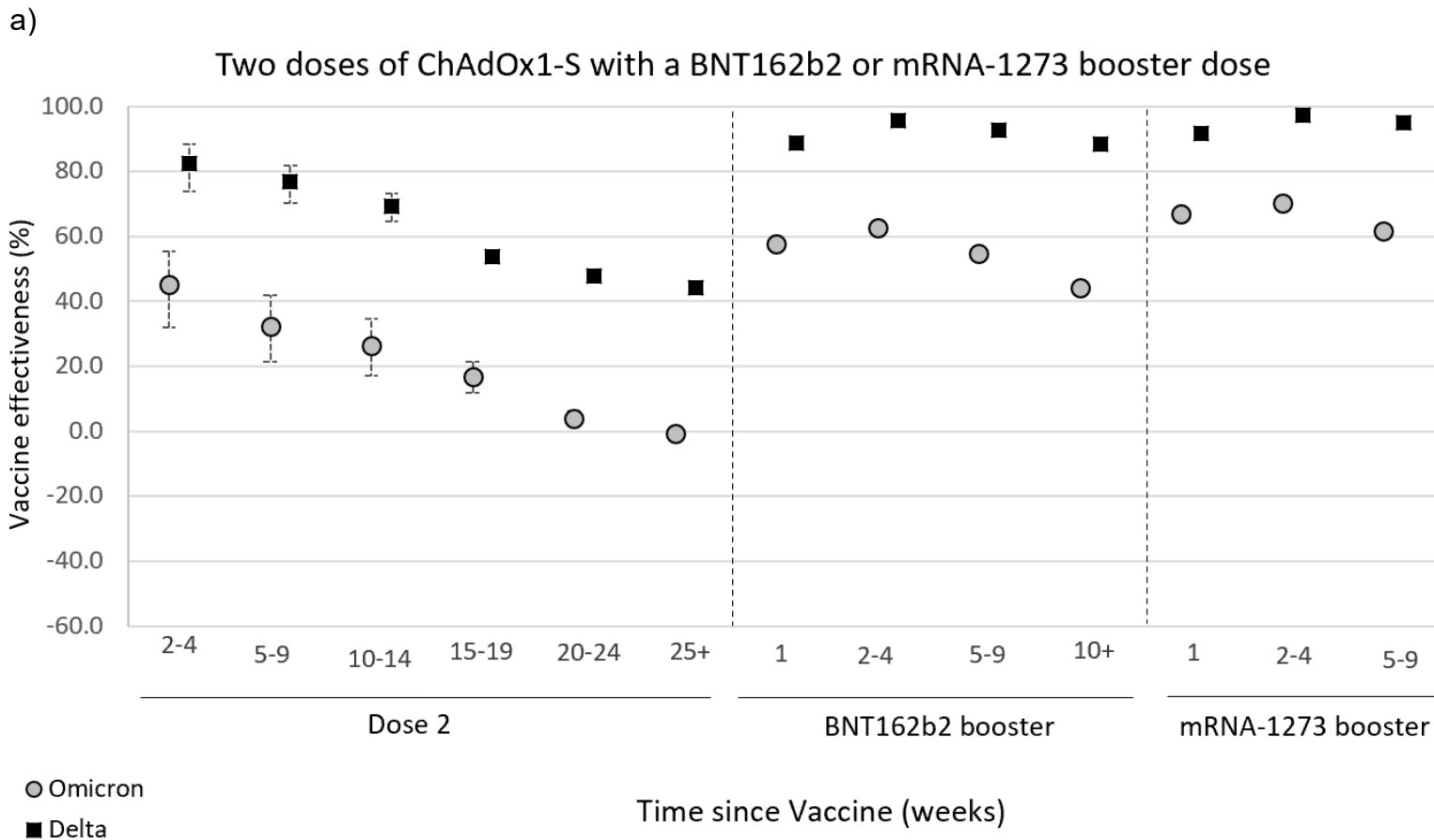
Large clinical trials have been undertaken for each of the COVID-19 vaccines approved in the UK which found that they are highly efficacious at preventing symptomatic disease in the populations that were studied. The clinical trials have been designed to be able to assess the efficacy of the vaccine against laboratory confirmed symptomatic disease with a relatively short follow up period so that effective vaccines can be introduced as rapidly as possible.

Post implementation real world vaccine effectiveness studies are needed to understand vaccine effectiveness against different outcomes (such as severe disease and onwards transmission), effectiveness in different subgroups of the population and against different variants as well as to understand the duration of protection. Vaccine effectiveness is estimated by comparing rates of disease in vaccinated individuals to rates in unvaccinated individuals. Below we outline the latest real-world evidence on vaccine effectiveness from studies in UK populations. Where available we focus on data related to the Omicron variant which is currently dominant in the UK. The findings are also summarised in Table 2.

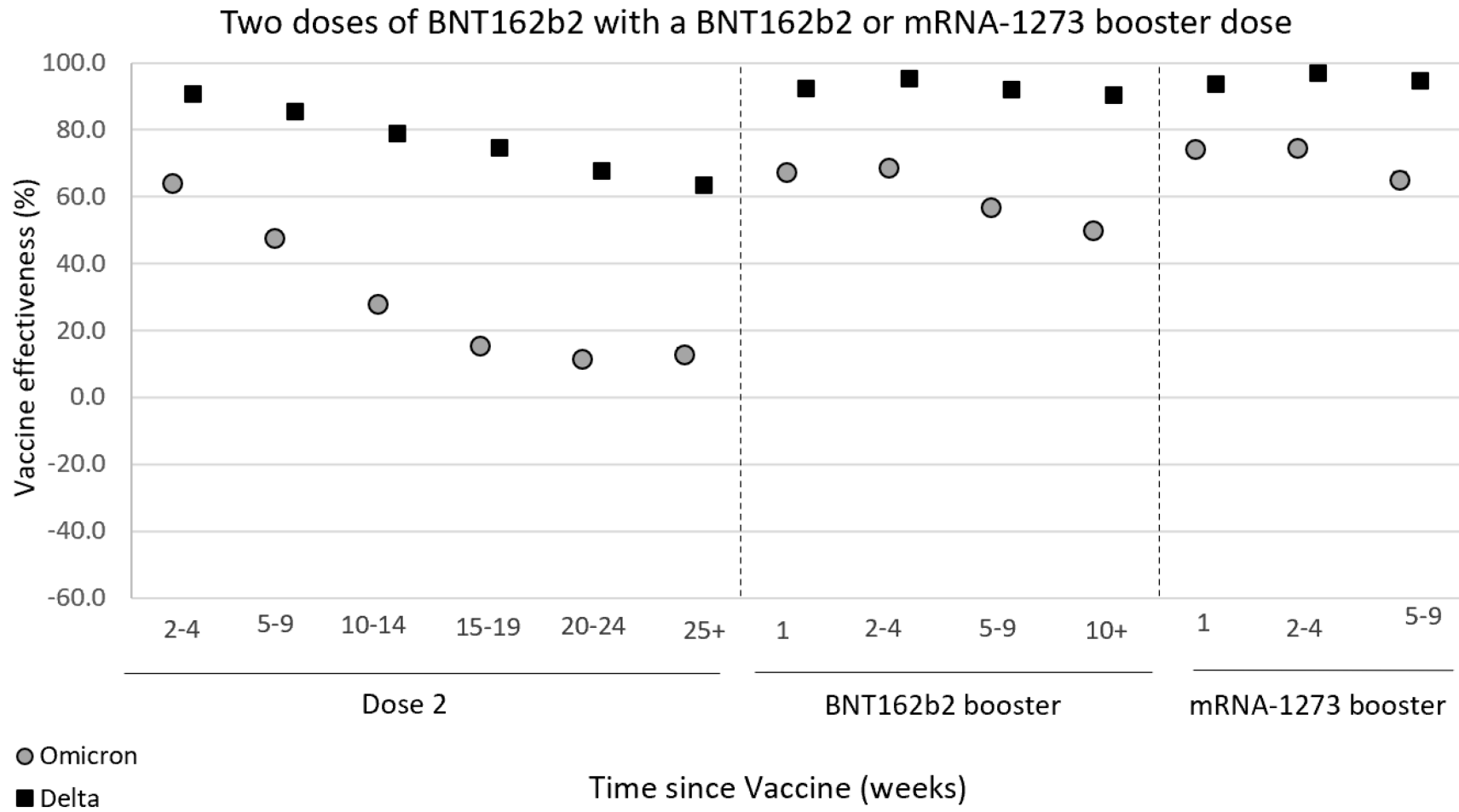
## Effectiveness against symptomatic disease

Vaccine effectiveness against symptomatic COVID-19 has been assessed in England based on community testing data linked to vaccination data from the National Immunisation Management System (NIMS), cohort studies such as the COVID Infection Survey and GP electronic health record data. After 2 doses of AstraZeneca vaccine, vaccine effectiveness against the Omicron variant starts at 45 to 50% then drops to almost no effect from 20 weeks after the second dose. With 2 doses of Pfizer or Moderna effectiveness dropped from around 65 to 70% down to around 10% by 20 weeks after the 2nd dose. 2 to 4 weeks after a booster dose of either the Pfizer or Moderna vaccine, effectiveness ranges from around 65 to 75%, dropping to 55 to 65% at 5 to 9 weeks and 45 to 50% from 10+ weeks after the booster. Vaccine effectiveness estimates for the booster dose are very similar, irrespective of the primary course received (3). Vaccine effectiveness is generally slightly higher in younger compared to older age groups.

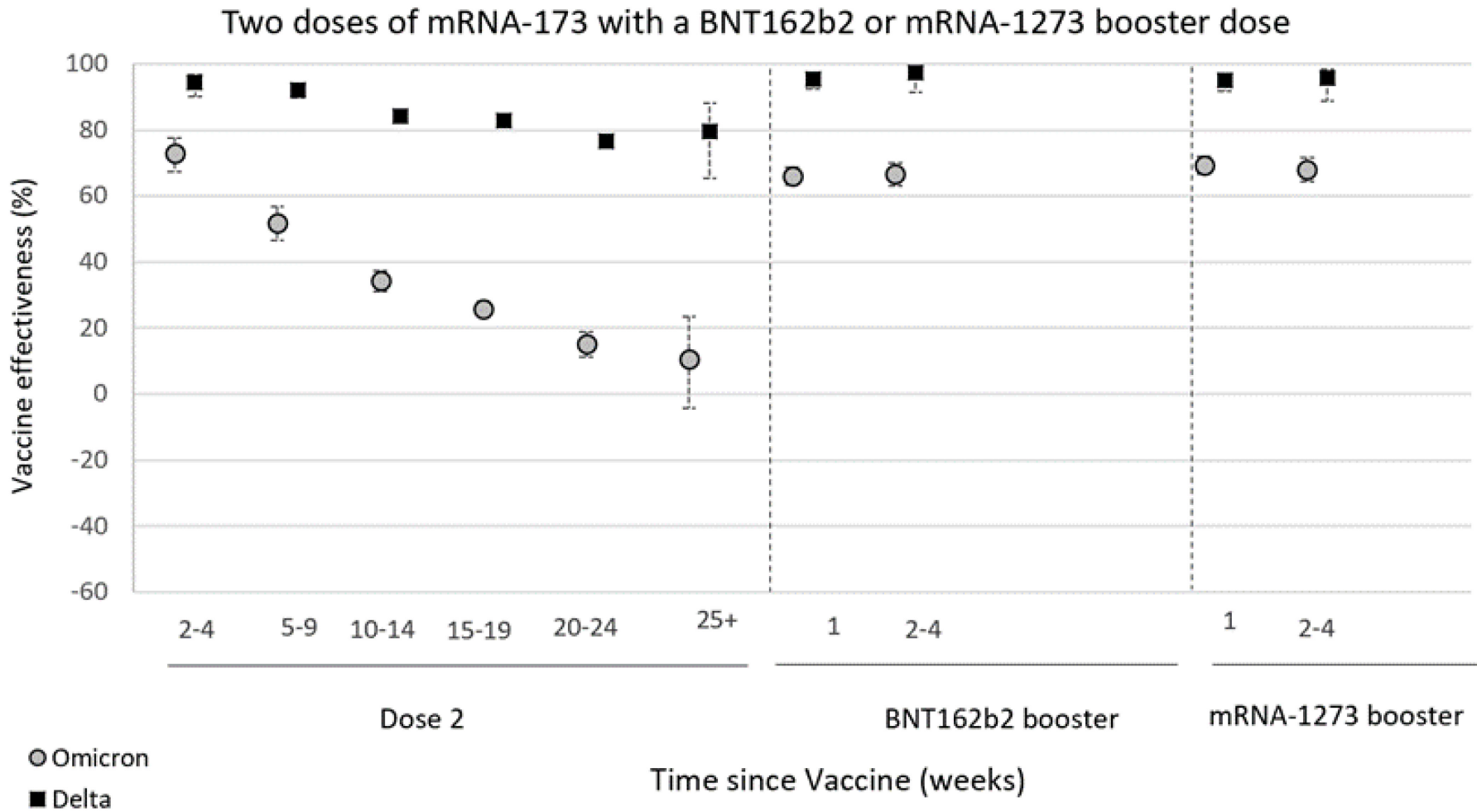
**Figure 1. Vaccine effectiveness against symptomatic diseases by period after dose 1 and dose 2 for Delta (black squares) and Omicron (grey circles) for a) recipients of 2 doses of AstraZeneca(ChAdOx1-S) vaccine as the primary course and Pfizer (BNT162b2) or Moderna (mRNA-1273) as a booster; b) recipients of 2 doses of Pfizer vaccine as the primary course and Pfizer or Moderna as a booster, and c) 2 doses of Moderna as a primary course (insufficient data for boosters after a Moderna primary course)**



b)



c)



Data (based primarily on the Alpha and Delta variants) suggest that in most clinical risk groups, immune response to vaccination is maintained and high levels of VE are seen with both the Pfizer and AstraZeneca vaccines. Reduced antibody response and vaccine effectiveness were seen after 1 dose of vaccine among the immunosuppressed group, however, after a second dose the reduction in vaccine effectiveness is smaller (4). Analyses by dosing interval suggest that immune response to vaccination and vaccine effectiveness against symptomatic disease improves with a longer (greater than 6 week interval) compared to a shorter interval of 3 to 4 weeks (5).



## Effectiveness against hospitalisation

Several studies have estimated vaccine effectiveness against hospitalisation in older ages, all of which indicate higher levels of protection against hospitalisation with all vaccines against the Alpha and Delta variants (6, 7, 8, 9). Vaccine effectiveness against hospitalisation with the Omicron variant has been estimated by combining the risk of becoming a symptomatic case with the risk of hospitalisation among symptomatic cases in vaccinated (all vaccines combined) compared to unvaccinated individuals (Table 1). One dose of vaccine was associated with a 43% reduced risk of hospitalisation among symptomatic cases with the Omicron variant, 2 doses with a 55% reduction up to 24 weeks after the 2nd dose and a 40% reduced risk 25 or more weeks after the 2nd dose, and a 3rd dose was associated with a 74% reduced risk of hospitalisation in the first 2-4 weeks after vaccination dropping slightly to a 66% reduction by 10+ weeks after the booster dose. When combined with vaccine effectiveness against symptomatic disease this was equivalent to vaccine effectiveness against hospitalisation of 58% after 1 dose, 64% 2-24 weeks after dose 2, 44% 25+ weeks after dose 2, and 92% dropping to 83% 10+ weeks after a booster dose. Combining the dose 3 periods, overall vaccine effectiveness 2+ weeks after the booster was 89% (95% confidence interval 86-91%).

**Table 1. Hazard ratios and vaccine effectiveness against hospitalisation (all vaccine brands combined). OR = odds ratio, HR = hazards ratio, VE = vaccine effectiveness**

Dose	Interval after dose (weeks)	OR v symptomatic disease	HR vs hospitalisation	VE vs hospitalisation
1	4+	0.74 (0.72-0.76)	0.57 (0.38-0.85)	58% (37-72)
2	2 to 24	0.81 (0.8-0.82)	0.45 (0.36-0.56)	64% (54-71)
2	25+	0.94 (0.92-0.95)	0.6 (0.49-0.74)	44% (30-54)
3	2 to 4	0.32 (0.31-0.33)	0.26 (0.19-0.35)	92% (89-94)
3	5 to 9	0.42 (0.41-0.43)	0.29 (0.23-0.37)	88% (84-91)
3	10+	0.5 (0.49-0.51)	0.34 (0.26-0.44)	83% (78-87)

## Effectiveness against mortality

High levels of protection (over 90%) are also seen against mortality with all 3 vaccines and against both the Alpha and Delta variants with relatively limited waning (6, 10, 11). Vaccine effectiveness estimates against mortality with the Omicron variant are not yet available but are expected to be similar to or higher than those against hospitalisation.

## Effectiveness against infection

Although individuals may not develop symptoms of COVID-19 after vaccination, it is possible that they could still be infected with the virus and could transmit to others. Understanding how effective vaccines are at preventing infection is therefore important to predict the likely impact of the vaccination programme on the wider population. In order to estimate vaccine effectiveness against infection, repeat asymptomatic testing of a defined cohort of individuals is required. Studies have now reported on vaccine effectiveness against infection in healthcare workers, care home residents and the general population with the Alpha and Delta variants (12, 13, 14, 15). Generally estimates are similar to or slightly lower than vaccine effectiveness estimates against symptomatic disease and there is evidence of significant waning in protection against infection over time. Estimates for vaccine effectiveness against infection with the Omicron variant are not yet available.

## Effectiveness against transmission

As described above, several studies have provided evidence that vaccines are effective at preventing infection. Uninfected individuals cannot transmit; therefore, the vaccines are also provide some protection against transmission. There may be additional benefit, beyond that due to prevention of infection, if some of those individuals who become infected despite vaccination are also at a reduced risk of transmitting (for example, because of reduced duration or level of viral shedding). Several studies have provided evidence of reduced risk of household transmission from vaccinated cases compared to unvaccinated cases (16, 17, 18, 19).

A summary of vaccine effectiveness evidence can be seen in Table 2.

**Table 2. Summary of evidence on vaccine effectiveness against different outcomes (a) Omicron (b) Delta (all vaccines combined)**

a)

	Dose 2			Dose 3		
	0-3 months	4-6 months	6+ months	0-3 months	4-6 months	6+ months
Infection	Insufficient data	Insufficient data	Insufficient data	Insufficient data	Insufficient data	Insufficient data
Symptomatic disease	25-70%	5-30%	0-10%	50-70%	40-50%	Insufficient data
Hospitalisation	65-85%	55-65%	30-55%	85-95%	80-85%	Insufficient data
Mortality	Insufficient data	Insufficient data	Insufficient data	Insufficient data	Insufficient data	Insufficient data

b)

	Dose 2			Dose 3		
	0-3 months	4-6 months	6+ months	0-3 months	4-6 months	6+ months
Infection	65-80%	50-65%	Insufficient data	Insufficient data	Insufficient data	Insufficient data
Symptomatic disease	65-90%	45-65%	40-60%	90-99%	90-95%	Insufficient data
Hospitalisation	95-99%	80-90%	70-85%	95-99%	Insufficient data	Insufficient data
Mortality	95-99%	90-95%	80-99%	95-99%	Insufficient data	Insufficient data

High Confidence	Evidence from multiple studies which is consistent and comprehensive
Medium Confidence	Evidence is emerging from a limited number of studies or with a moderately level of uncertainty
Low Confidence	Little evidence is available at present and results are inconclusive

## Vaccine effectiveness publications

UKHSA and collaborators have published a significant amount of [research into vaccine effectiveness](#), which is summarised on pages 4 to 12. The publications listed in table 3 provide further results and details on the methods used.

**Table 3. UKHSA publications on the effectiveness of COVID-19 vaccination**

Publication	Subject
<a href="#">Effectiveness of BNT162b2 and ChAdOx1 against SARS-CoV-2 household transmission: a prospective cohort study in England</a>	This study reports on vaccine effectiveness against transmission of COVID-19 with the Alpha and Delta variants.
<a href="#">Effectiveness of 3 doses of COVID-19 vaccines against symptomatic COVID-19 and hospitalisation in adults aged 65 years and older</a>	Updated analysis on the effectiveness of 3 doses of COVID-19 vaccines against symptomatic COVID-19 and hospitalisation in adults aged 65 years and older.
<a href="#">Effectiveness of BNT162b2 COVID-19 booster vaccine against covid-19 related symptoms and hospitalization in England</a>	This study provides real world evidence of significant increased protection from the booster vaccine dose against symptomatic disease and hospitalisation irrespective of the primary course.
<a href="#">Effectiveness of COVID-19 vaccines against the Omicron (B.1.1.529) variant of concern</a>	This study reports on the vaccine effectiveness against symptomatic disease with 2 dose courses of BNT1622 and ChAdOx1-S as well as booster doses of BNT162b2 following a primary course of either BNT1622 or ChAdOx1-S.
<a href="#">Effectiveness of BNT162b2 (Comirnaty, Pfizer-BioNTech) COVID-19 booster vaccine against covid-19 related symptoms in England: test negative case-control study</a>	Results from the first UK real-world study by UKHSA show significantly increased protection against symptomatic disease from a booster dose of the Pfizer-BioNTech vaccine in those aged 50 years and older.
<a href="#">Duration of Protection against Mild and Severe Disease by Covid-19 Vaccines</a>	This study reports on the vaccine effectiveness and duration of protection of Comirnaty, Vaxzevria and Spikevax against mild and severe COVID-19 in the UK.
<a href="#">Serological responses and vaccine effectiveness for extended COVID-19 vaccine schedules in England</a>	This study investigates the impact of different dosing schedules on immune response and vaccine effectiveness.

Publication	Subject
<a href="#">Pfizer-BioNTech and Oxford AstraZeneca COVID-19 vaccine effectiveness and immune response among individuals in clinical risk groups</a>	This study reports on the immune response and clinical effectiveness of COVID-19 vaccine among individuals in clinical risk groups. A <a href="#">supplementary appendix</a> is also available to download.
<a href="#">Effectiveness of COVID-19 vaccines against hospital admission with the Delta (B.1.617.2) variant</a>	This study reports on the effectiveness of COVID-19 vaccines on hospitalisation disease with the Delta variant. A supplementary appendix is also available to download.
<a href="#">Effectiveness of Covid-19 Vaccines against the B.1.617.2 (Delta) Variant</a>	This study reports on the effectiveness of COVID-19 vaccines on symptomatic disease with the Delta variant.
<a href="#">Effectiveness of BNT162b2 mRNA and ChAdOx1 adenovirus vector COVID-19 vaccines on risk of hospitalisation among older adults in England: an observational study using surveillance data</a>	A study using the SARI watch surveillance system of COVID-19 hospitalisations found high levels of protection against hospitalisation after both a single dose and 2 doses of COVID-19 vaccines.
<a href="#">Effectiveness of BNT162b2 mRNA vaccine and ChAdOx1 adenovirus vector vaccine on mortality following COVID-19</a>	A study on deaths with COVID-19 indicates that COVID-19 vaccines offer high levels of protection against mortality.
<a href="#">Effect of Vaccination on Household Transmission of SARS-CoV-2 in England</a>	Impact of vaccination on household transmission of SARS-COV-2 in England is an analysis to determine whether individuals who have received vaccine, but still become infected with SARS-COV-2 up to 60 days after the first dose, are less likely than unvaccinated cases to transmit to their unvaccinated household contacts.
<a href="#">Vaccine effectiveness of the first dose of ChAdOx1 nCoV-19 and BNT162b2 against SARS-CoV-2 infection in residents of Long-Term Care Facilities (VIVALDI study)</a>	The VIVALDI study found evidence that COVID-19 vaccines were associated with a substantially reduced risk of infection in care home residents.
<a href="#">Effectiveness of BNT162b2 and ChAdOx1 nCoV-19 COVID-19 vaccination at preventing hospitalisations in people aged at least 80 years: a test-negative, case-control study</a>	The Avon CAP study, conducted in 2 hospitals in Bristol, found evidence of high levels of protection against hospitalisation in 80+ year olds with a single dose of either vaccine.
<a href="#">COVID-19 vaccine coverage in health-care workers in England and effectiveness of</a>	Early data from PHE's SIREN study shows a promising impact on infection in healthcare

Publication	Subject
<a href="#">BNT162b2 mRNA vaccine against infection (SIREN): a prospective, multicentre, cohort study</a>	workers aged under 65. Healthcare workers in the study are tested for COVID-19 every 2 weeks – whether or not they have symptoms.
<a href="#">Effectiveness of the Pfizer-BioNTech and Oxford-AstraZeneca vaccines on covid-19 related symptoms, hospital admissions, and mortality in older adults in England: test negative case-control study</a>	Early data from routine COVID-19 testing in older adults shows that vaccines are effective at preventing COVID-19 disease and severe outcomes.
<a href="#">Impact of COVID-19 vaccination programme on seroprevalence in blood donors in England, 2021</a>	Report on the Impact of COVID-19 vaccination programme on seroprevalence in blood donors in England, 2021.

## Population impact

Vaccines typically have both direct effects on those who are vaccinated and indirect effects on the wider population due to a reduced probability that people will come into contact with an infected individual. The overall impact of the vaccination programme may therefore extend beyond that estimated through vaccine effectiveness analysis.

Estimating the impact of a vaccination programme is challenging as there is no completely unaffected control group. Furthermore, the effects of the vaccination programme need to be differentiated from that of other interventions (for example, lockdowns or outbreak control measures), changes in behaviour and any seasonal variation in COVID-19 activity.

UKHSA and other government and academic partners monitor the impact of the of the vaccination programme on levels of COVID-19 antibodies in the population and different disease indicators, including hospitalisations and mortality. This is done through population-based testing and through modelling which combines vaccine coverage rates in different populations, estimates of vaccine effectiveness and disease surveillance indicators.

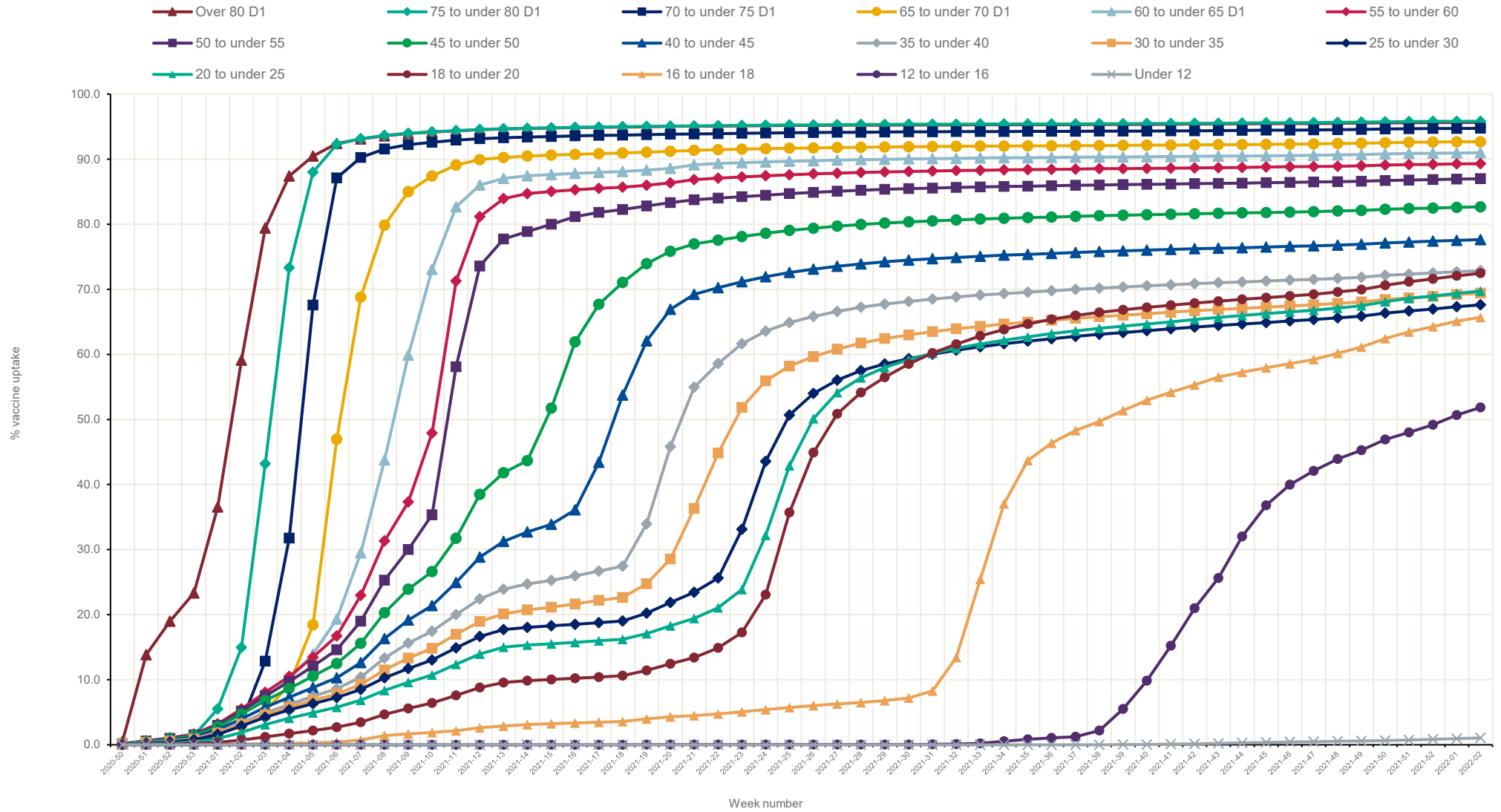
## Vaccine coverage

The data in this week's report covers the period from 8 December 2020 to 16 January 2022 (week 2) (Figure 2). It shows the provisional number and percentage of living people in England who have had received 1, 2 or 3 doses of a COVID-19 vaccination by age group and week since the start of the programme. Further data on vaccine uptake by age in England can be found in the [national flu and COVID-19 surveillance reports](#). Age is calculated as age on the 31 August 2021, that is, academic cohort for all ages.

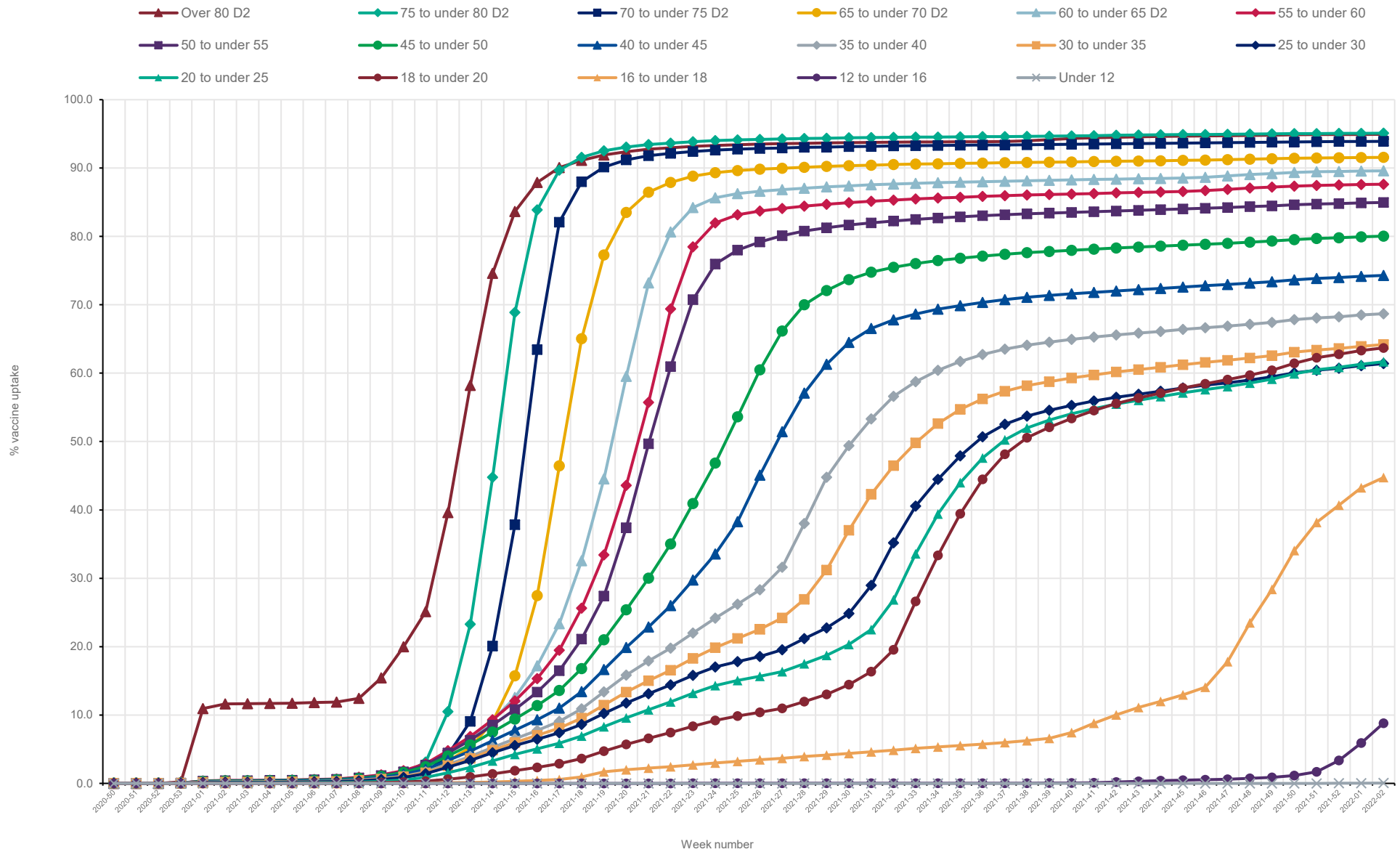


**Figure 2. Cumulative weekly vaccine uptake by age**

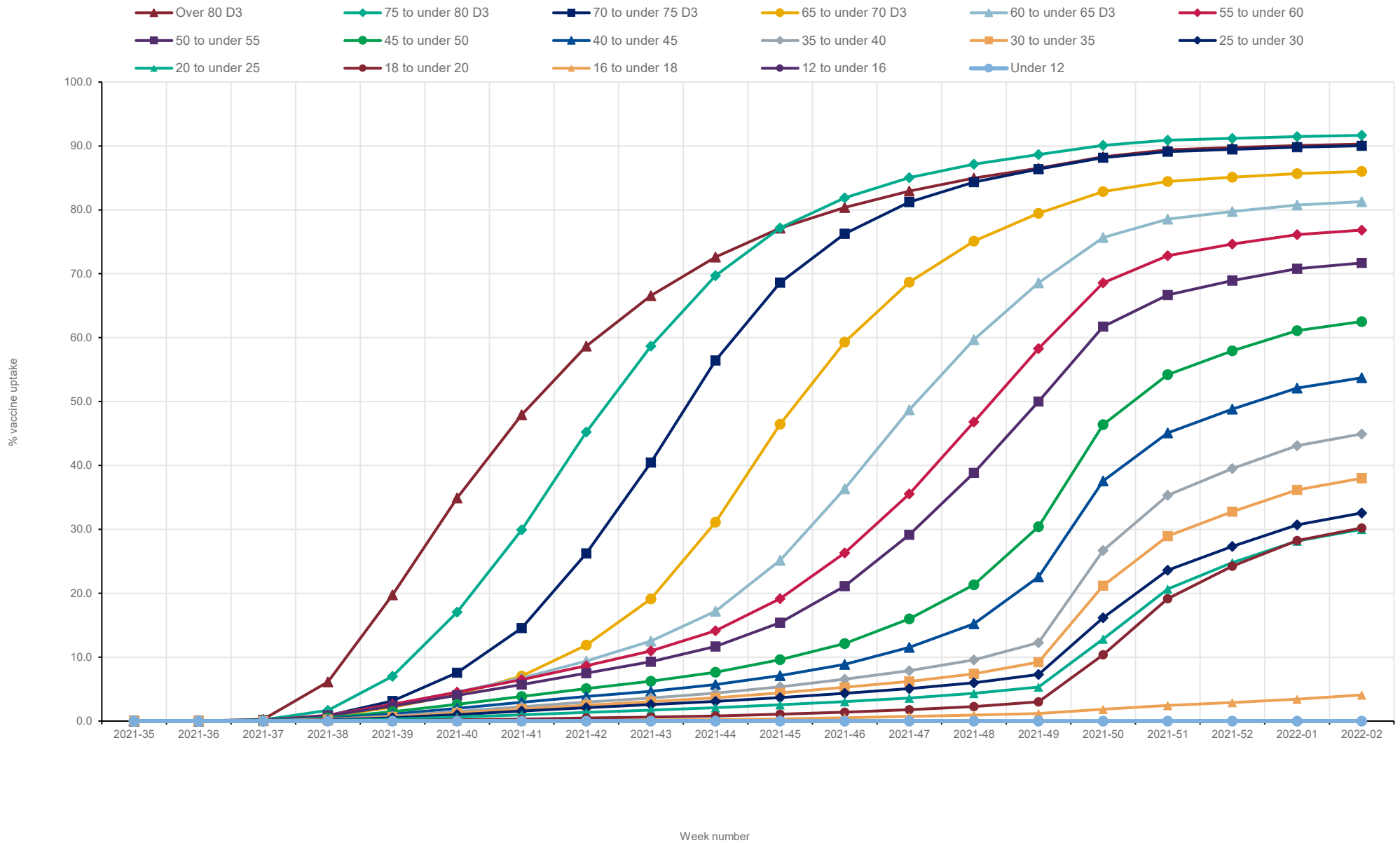
a) Dose 1



b) Dose 2



c) Dose 3 - please note the data for this graph is shown from week 35 (week ending 05/09/2021)



## Vaccination in immunosuppressed individuals

Provisional vaccine uptake data in living and resident people identified as immunosuppressed in England to the end of week 2 can be found in Table 4. This shows that vaccine uptake in the 534,232 identified as immunosuppressed was 95.5% for at least dose 1, 94.0% for at least 2 doses and 86.1% for at least 3 doses. Data on vaccine uptake in people with at least 3 doses by age in England can be found in the [National flu and COVID-19 surveillance reports](#).

**Table 4. Vaccine uptake in people identified as immunosuppressed in England**

<b>Immuno-suppression</b>	<b>People in NIMs Cohort</b>	<b>Numbers vaccinated with at least 1 dose</b>	<b>Percentage vaccine uptake with at least 1 dose</b>	<b>Numbers vaccinated with at t least 2 doses</b>	<b>Percentage vaccine uptake with at least 2 doses</b>	<b>Numbers vaccinated with at least 3 doses</b>	<b>Percentage vaccine uptake with at least 3 doses</b>
England	534,232	510,229	95.5	501,986	94.0	460,227	86.1

Detailed information on the [characterisation of the immunosuppressed group by NHS Digital](#) is available.

## Vaccination in pregnancy

Vaccination of pregnant women alongside their peers is recommended in the UK and other countries as an important way to protect pregnant women and their unborn children against COVID-19 disease. Vaccination of pregnant women is strongly recommended by the [Royal College of Obstetricians and Gynaecologists and the Royal College of Midwives](#).

As of 16 April, the Joint Committee on Vaccination and Immunisation (JCVI) advice is that pregnant women should be offered COVID-19 vaccines at the same time as people of the same age or risk group. Therefore, any pregnant women not in a higher-risk group would likely have received their first dose from mid-April 2021 as part of the general adult population programme in those aged under 50 years. This was offered by age group, working back from older to younger individuals.

Prior to this, COVID-19 vaccine was delivered to priority groups based on clinical risk and risk of exposure, and delivered in order of priority. It was advised that vaccine could be offered to pregnant and breast-feeding women who were in these risk categories and at high risk of ongoing exposure or at high risk of serious complications of COVID-19 after the JCVI met on 22 December 2020. The Pfizer vaccine was rolled out from early December 2020, AstraZeneca vaccine was approved for use in the UK at the end of December 2020 and the Moderna vaccine became available from April 2021.

In England more than 80,000 women indicated that they were or could be pregnant at the time they were vaccinated by the end of September 2021 (20). In Scotland more than 14,000 women were vaccinated during pregnancy to the end of August 2021 (21) and nearly 2,000 women in Wales to the end September 2021 (22). In the USA more than 175,000 women have indicated they were pregnant at the time they received COVID-19 vaccination to 22 November 2021 (23). There is evidence of high levels of protection against SARS-CoV-2 infection in pregnant women after COVID-19 vaccination (24 to 26) and evidence that vaccination induces higher antibody levels than after disease (26). Between February and September 2021, 0.4% of 1,714 pregnant women with COVID-19 symptoms who required hospital treatment in the UK had received 2 doses of COVID-19 vaccine and, of 235 pregnant women who were admitted to intensive care with COVID-19 disease in that period, none had received 2 doses of vaccine (27).

Complications linked with COVID-19 disease in pregnancy (critical care admission and perinatal deaths) in Scotland were far more common in unvaccinated than in vaccinated pregnant women (28, 29). No safety concerns relating to COVID-19 vaccination of pregnant women have been found in published studies to date (30 to 33). The vaccine side-effects appear to be similar in pregnant and non-pregnant populations (30).

Increased severity of COVID-19 disease in pregnant and recently pregnant women has been reported after the first SARS-CoV-2 wave in England (34, 35) and in Scotland (28). Pregnant women who develop severe disease have increased rates of admission to ICU, need for

invasive ventilation and pre-term delivery. Data from the US Centers for Disease Control and Prevention (CDC) found that pregnant women are around 3 times more likely to be admitted to ICU and nearly 3 times more likely to require invasive ventilation compared to non-pregnant women with COVID-19 disease and 25% more likely to die (36).

COVID-19 vaccines used in the UK programme do not contain live SARS-CoV-2 virus and therefore cannot infect a pregnant woman or her unborn child with the virus. Whilst, as is commonly the case in trials of medicinal products, pregnant women were excluded from the original COVID-19 vaccine trials, there is accumulating experience and evidence of the safe and effective use of mRNA vaccines (such as the Pfizer-BioNTech or Moderna) in pregnant women. This report provides first the early data on COVID-19 vaccination in pregnant women and provides preliminary findings.

## Vaccine coverage

COVID-19 vaccine coverage in women before they give birth has increased as more women have become eligible for vaccination. In May 2021, only 2.8% of women giving birth had received at least 1 dose of vaccine. This increased to 9.8% of women who gave birth in June, 16.0% in July and 22.2% in August 2021 (Table 5).

In the overall 8 month period between January and August 2021 a total of 355,299 women gave birth of whom 24,759 had received at least 1 dose of COVID-19 vaccine prior to delivery. For the 18,187 women where enough information was available to derive the trimester in which the vaccine was administered, 695 (3.8%) were immunised with their earliest vaccine dose in pregnancy in their first trimester, 4,487 (24.7%) were immunised in their second trimester and 13,005 (71.5%) were immunised in their third trimester.

Of all vaccinated women giving birth, 80.8% had received Pfizer vaccine, 11.1% had received AstraZeneca vaccine and 8.1% had received Moderna vaccine.

**Table 5. Overall vaccine coverage in women giving birth, by month of delivery**

Month	Women giving birth	Vaccinated	Unvaccinated	Unknown vaccine status
Jan-21	41,955	18 (0.0%)	41,766 (99.5%)	171 (0.4%)
Feb-21	40,105	84 (0.2%)	39,879 (99.4%)	142 (0.4%)
Mar-21	44,657	292 (0.7%)	44,230 (99.0%)	135 (0.3%)
Apr-21	43,363	495 (1.1%)	42,687 (98.4%)	181 (0.4%)
May-21	44,831	1,255 (2.8%)	43,387 (96.8%)	189 (0.4%)
Jun-21	44,822	4,383 (9.8%)	40,277 (89.9%)	162 (0.4%)
Jul-21	48,409	7,746 (16.0%)	40,468 (83.6%)	195 (0.4%)
Aug-21	47,157	10,486 (22.2%)	36,464 (77.3%)	207 (0.4%)

**Table 6. Vaccine coverage by ethnicity, for women giving birth June to August 2021**

<b>Ethnicity</b>	<b>Women giving birth in June to August</b>	<b>Vaccinated</b>	<b>Unvaccinated</b>
Asian	17,248	2,320 (13.5%)	14,928 (86.5%)
Black	6,736	370 (5.5%)	6,366 (94.5%)
Other	5,579	865 (15.5%)	4,714 (84.5%)
Mixed	3,311	463 (14.0%)	2,848 (86.0%)
White	100,555	17,599 (17.5%)	82,956 (82.5%)
Unknown <sup>1</sup>	6,395	998 (15.6%)	5,397 (84.4%)

<sup>1</sup> 564 women could not be matched with a NIMS record and their ethnicity and vaccine status are therefore unknown.

**Table 7. Vaccine coverage by quintile of deprivation of the small area in which the woman lived, for women giving birth June to August 2021**

<b>Quintile of deprivation</b>	<b>Women giving birth in June to August</b>	<b>Vaccinated</b>	<b>Unvaccinated</b>
1 - most deprived	35,263	2,751 (7.8%)	32,512 (92.2%)
2	30,448	3,964 (13.0%)	26,484 (87.0%)
3	27,146	4,847 (17.9%)	22,299 (82.1%)
4	24,462	5,189 (21.2%)	19,273 (78.8%)
5 - least deprived	21,751	5,770 (26.5%)	15,981 (73.5%)
Unknown <sup>1</sup>	754	94 (12.5%)	660 (87.5%)

<sup>1</sup> 564 women could not be matched with a NIMS record and their quintile of deprivation and vaccine status are therefore unknown.

**Table 8. Vaccine coverage by age of mother, for women giving birth June to August 2021**

<b>Age</b>	<b>Women giving birth in June to August</b>	<b>Vaccinated</b>	<b>Unvaccinated</b>
Under 20	2,463	71 (2.9%)	2,392 (97.1%)
20 to 24	15,903	738 (4.6%)	15,165 (95.4%)
25 to 29	35,417	2,915 (8.2%)	32,502 (91.8%)
30 to 34	48,655	9,164 (18.8%)	39,491 (81.2%)
35 to 39	29,719	7,709 (25.9%)	22,010 (74.1%)
40 to 44	7,246	1,924 (26.6%)	5,322 (73.4%)
45 and above <sup>1</sup>	420	93 (22.1%)	327 (77.9%)

<sup>1</sup> 564 women could not be matched with a NIMS record and their age group and vaccine status are therefore unknown.

Using the most recent 3-month period (during which time there were 22,615 vaccinated women giving birth, accounting for 91.3% of all vaccinated women giving birth since January) there were differences in vaccine coverage by both ethnicity (Table 6) and by quintile of deprivation (Table 7). Women of Black ethnicity and women living in the most deprived areas in England were least likely to have been vaccinated with at least 1 dose of COVID-19 vaccine before they gave birth. Coverage increased as levels of deprivation decreased (Table 7). Vaccine coverage increased with increasing age group to those aged 40 to 44 years in whom uptake was 26.6% (Table 8). Women who gave birth between January and August 2021 aged 45 years or older had vaccine coverage of 22.1% and were offered vaccine earlier than the younger age groups.

## Methods

Data on vaccination status are recorded in a central dataset called the National Immunisation Management Service (NIMS).<sup>1</sup> In addition, NHS Digital manages the Hospital Episode Statistics (HES) datasets, containing information about hospital activity in England.

Records of women giving birth ('delivery records') in the months since 1 January 2021 were identified in HES. De-duplication of delivery records resulted in a dataset of women who had given birth with 1 record per woman, identified by her NHS Number, and the latest 'delivery episode' associated with her. These were then linked back to women in the NIMS using the NHS Number, and each woman's vaccine status was established as either vaccinated or unvaccinated (plus a small number where vaccine status was unknown), using the NIMS vaccine records. The date the vaccine was administered had to be on an earlier date than the date the woman gave birth. The ethnicity, residence and age information used to generate Tables 6 to 8 was taken from the NIMS record.

In order to establish the trimester each woman first received the vaccine, the gestational age on the date at which she gave birth was required and was used to establish the start of her pregnancy. Women recorded as receiving their earliest dose of the vaccine within 97 days of the start of their pregnancy were counted as having received the vaccine in trimester 1; women recorded as receiving their earliest dose of the vaccine between 98 and 195 days of the start of their pregnancy were counted as having received the vaccine in trimester 2 and women receiving the vaccine over 195 days (but before the day of delivery) were counted as having received the vaccine in trimester 3.

The analysis within this section was carried out on 16 November 2021. The latest HES data available are for August 2021, and HES data since April 2021 is considered provisional.

---

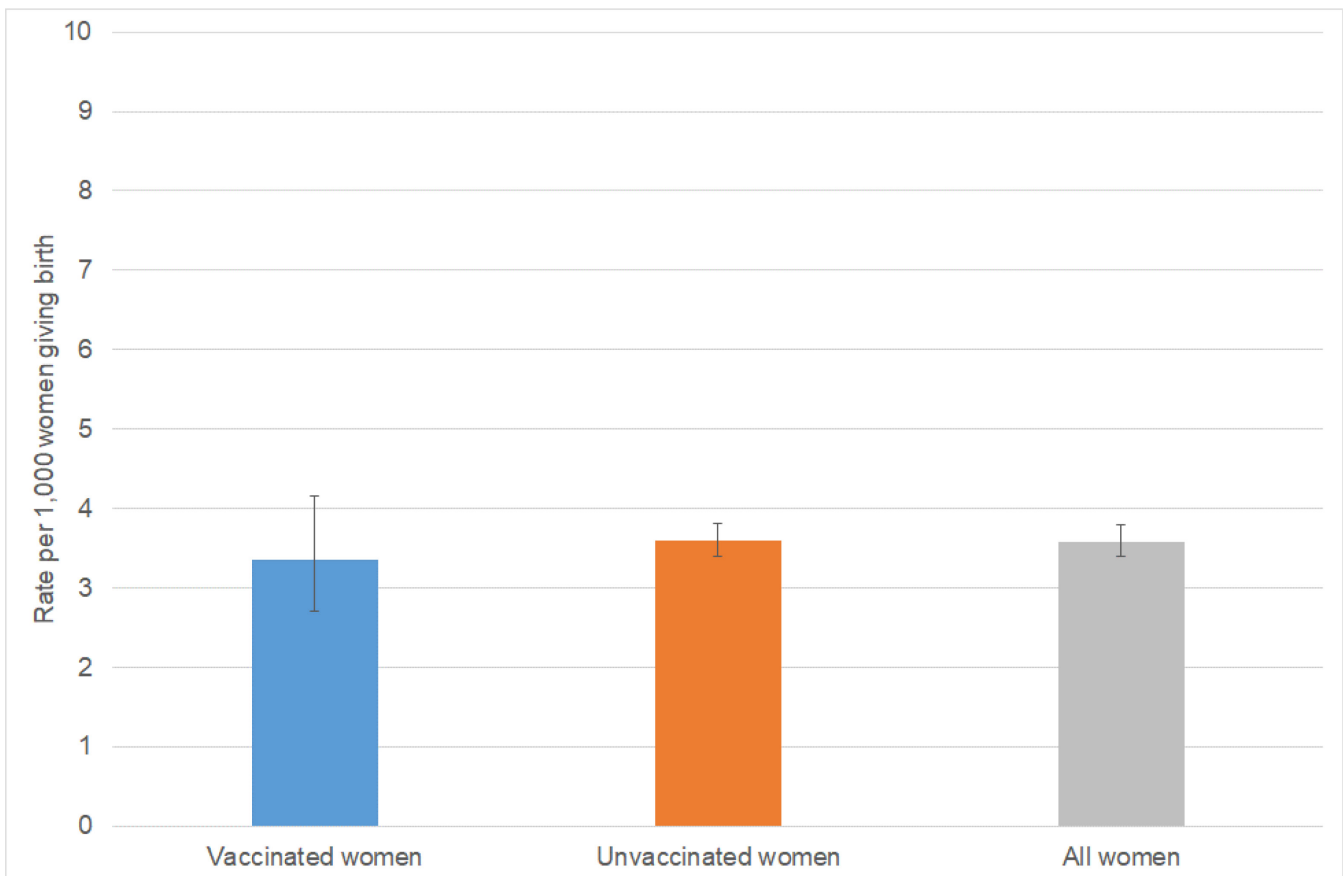
<sup>1</sup> NIMS Data controllers are NHSEI and NHSD. The NIMS IT software is commissioned by NHSEI via South Central West CSU and is provided by the System C and Graphnet Care Alliance.



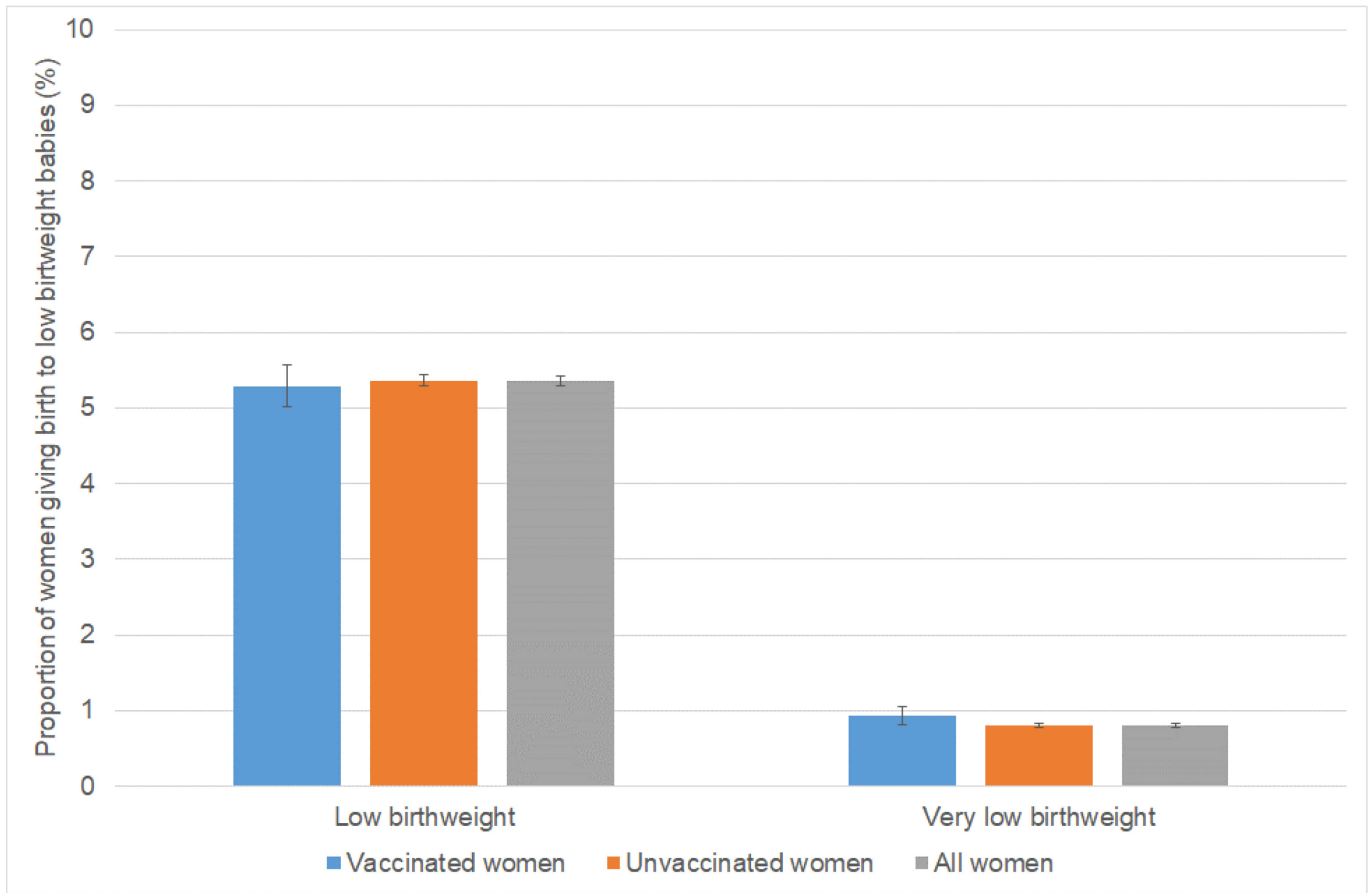
## Pregnancy outcomes

The following figures present rates of women in England who gave birth to a stillborn baby (based on recorded diagnoses), the proportion of women giving birth to a baby with low birthweight (<2,500g) or a very low birthweight (<1,500g) and the proportion of women giving birth prematurely (<37 weeks gestation), very prematurely (<32 weeks gestation) and extremely prematurely (<28 weeks gestation). It assesses whether rates were different in women who received a COVID-19 vaccination in pregnancy compared with the unvaccinated and overall population but does not take other factors that might affect these outcomes into account, such as age and whether the woman was categorised as clinically extremely vulnerable (CEV). [More detailed statistical analyses are planned](#). These pregnancy outcomes are routinely reported as official statistics annually by ONS, however HES data was used to monitor outcomes more quickly than ONS data allow.

**Figure 3. Stillbirths experienced by women giving birth January to August 2021**



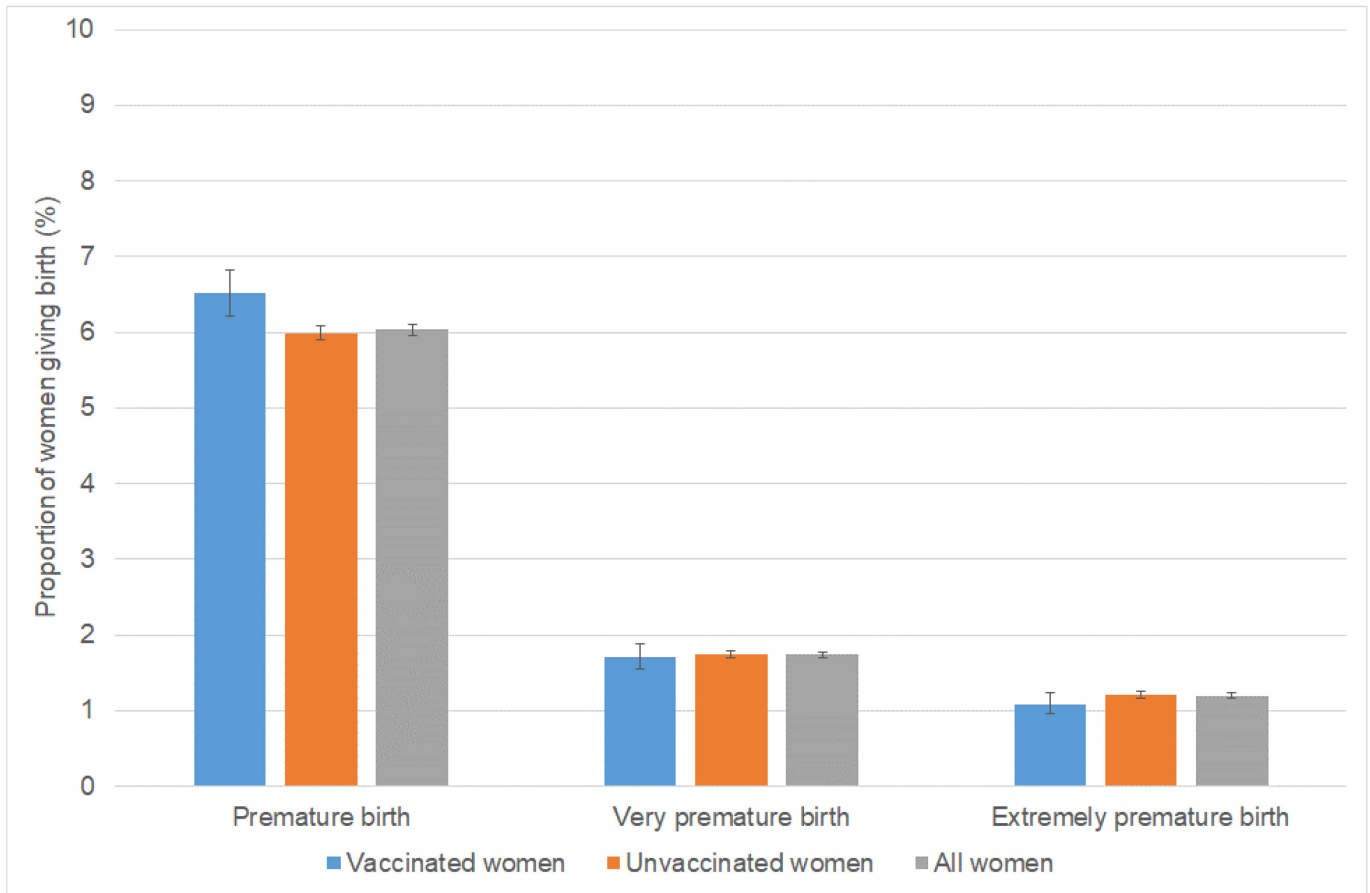
**Figure 4. Low birthweight births, women giving birth January to August 2021**



The stillbirth rate for vaccinated women who gave birth (3.35 per 1,000, 95%CI 2.71 to 4.15) was similar to the rate for unvaccinated women (3.60 per 1,000, 95%CI 3.40 to 3.81) giving birth between January and August 2021 (Figure 3). In the same period, the proportion of vaccinated women giving birth to babies with low birthweight (5.28%, 95%CI 5.01 to 5.57) was comparable to the proportion for unvaccinated women (5.36%, 95%CI 5.29 to 5.44) (Figure 4). Similarly, 0.93% (95%CI 0.82 to 1.06) of vaccinated pregnant women and 0.80% (95%CI 0.77 to 0.83) of unvaccinated pregnant women had a very low birthweight baby.

The proportion of women with premature births was 6.51% (95%CI 6.21 to 6.82) in vaccinated women and 5.99% (95%CI 5.91 to 6.08) in unvaccinated women. The proportion of women with very premature births was 1.71% (95%CI 1.55 to 1.88) in vaccinated and 1.74% (95%CI 1.70 to 1.79) in unvaccinated women. The proportion of women with extremely premature births was 1.09% (95%CI 0.97 to 1.23) in vaccinated women and 1.21% (95%CI 1.17 to 1.25) in unvaccinated women.

**Figure 5. Premature births in women giving birth January to August 2021**



The first women to be offered COVID-19 vaccine were those who were categorised as CEV and women of older age who are at increased risk of the 3 outcomes presented here (given the medical conditions that placed them in this category), together with healthcare professionals at higher risk of COVID-19 exposure. Women with underlying conditions that put them at very high risk of serious complications of COVID-19 and older pregnant women will therefore account for a relatively high proportion of early deliveries in vaccinated women. For example, whilst 26.7% of the women who gave birth were aged 35 years or older this age group accounted for 43.0% of all vaccinated women who gave birth. It is therefore very reassuring that vaccinated women had no increased risk of suffering a stillbirth or having low birthweight babies. Whilst the proportion of women with a premature birth was slightly higher in vaccinated women, this could be explained by differences in their age and underlying health risk. The proportion of very or extremely premature births, where the baby is at more risk, was similar in vaccinated and unvaccinated women.

## Methods

For the analysis in this section, women aged under 50 years were identified in the NIMS dataset and their vaccine status was established as either vaccinated or unvaccinated, using the NIMS vaccine records. These records were then linked, where the woman had given birth, to the de-duplicated delivery records from the HES dataset by NHS number. The date the vaccine was

administered had to be on an earlier date than the date the woman gave birth. The analysis within this section was carried out on 16 November 2021. The latest HES data available are for August 2021, and HES data since April 2021 is considered provisional.

Stillbirths were identified as records where any 1 or more of the first 12 diagnoses was the following: Z37.1: Single stillbirth; Z37.3 Twins, 1 liveborn and 1 stillborn; Z37.4 Twins, both stillborn; Z37.6: Other multiple births, some liveborn; Z37.7: Other multiple births, all stillborn. Low birthweight and very low birthweight deliveries were identified as records where any of the first 4 babies born had a known birthweight between 500g and 2499g (1499g or lower for very low birthweight).

Premature deliveries were identified as records where the gestational length was less than 37 weeks (less than 32 weeks for very premature, and less than 28 weeks for extremely premature).

Low birthweight is by convention presented as a percentage of all deliveries with known birthweights, and prematurity usually presented as a percentage of all deliveries with known gestational length. However here they are presented as percentages of all deliveries, to reduce the chance of significant findings arising from a change in the overall success of recording these fields during the pandemic. Figures will therefore differ from official statistics and should be considered for surveillance purposes only.

Confidence intervals were calculated using the Wilson Score method (37). A confidence interval is a range of values that is used to quantify the imprecision in the estimate of a particular indicator. Specifically it quantifies the imprecision that results from random variation in the measurement of the indicator. A wider confidence interval shows that the indicator value presented is likely to be a less precise estimate of the true underlying value.

## Main findings

COVID-19 vaccination is the safest and most effective way for women to protect themselves and their babies against severe COVID-19 disease.

COVID-19 vaccine coverage in pregnant women at delivery has increased as more women have become eligible for vaccination reaching 22.2% for women who gave birth in August 2021. This coverage is in line with the 25% of women in [Scotland](#) and 18.4% in [Wales](#) delivering in August 2021 who had received any dose and their first dose of COVID-19 vaccine respectively prior to delivery.

Coverage increased with decreasing levels of deprivation. Women of Black ethnicity had the lowest vaccine coverage.

Coverage increased with increasing age group to 40 to 44 years. This reflects the roll out of the vaccine by age group and the longer availability of vaccination in older pregnant women.

Women who had received COVID-19 vaccine and delivered between January and August 2021 were more likely to be in older age groups and to be in clinically extremely vulnerable risk groups as these women were offered COVID-19 vaccination earlier than younger women and those who were not in clinical risk categories.

It is reassuring, therefore, that vaccinated and unvaccinated women had a similar risk of stillbirth between January and August 2021. Vaccinated and unvaccinated women who gave birth in this period also had similar proportions of low and very low birthweight babies.

Whilst the proportion of premature births was slightly higher in vaccinated women, this could be explained by differences in their age and underlying health risk (as CEV women were prioritised in the earlier months of the roll-out). The proportions of very or extremely premature births, where the baby is at more risk, were similar in vaccinated and unvaccinated women.

## Vaccination status in cases, deaths and hospitalisations

Vaccination status of COVID-19 cases, deaths and hospitalisations by week of specimen date over the past 4 weeks up to week 2 (up to 16 January 2022) are shown in tables 9 to 11.

These data are published to help understand the implications of the pandemic to the NHS, for example understanding workloads in hospitals, and to help understand where to prioritise vaccination delivery. **These raw data should not be used to estimate vaccine effectiveness.** We have published a [blog post](#) to accompany this section of the vaccine surveillance report.

### Methods

COVID-19 cases and deaths identified through routine collection from the Second Generation Surveillance System (SGSS) and from UKHSA EpiCell's deaths data, as described [in the technical summary](#), were linked to the National Immunisation Management System (NIMS) to derive vaccination status, using an individual's NHS number as the unique identifier.

Attendance to emergency care at NHS trusts was derived from the Emergency Care DataSet (ECDS) managed by NHS Digital. The same data source was used to identify COVID-19 cases where the attendance to emergency care resulted in admission to an NHS trust.

ECDS is updated weekly, and cases are linked to these data twice weekly. Data from ECDS are subject to reporting delays as, although NHS trusts may update data daily, the mandatory deadline for submission is by the 21st of every month. This means that for weeks immediately following the 21st of a month, numbers may be artificially low and are likely to be higher in later versions of the report.

Data from ECDS also only report on cases who have been presented to emergency care and had a related overnight patient admission and do not show those who are currently in hospital with COVID-19. As such, it is not appropriate for use for surveillance of those currently hospitalised with COVID-19. In addition, these data will not show cases who were directly admitted as inpatients without presenting to emergency care.

The outcome of overnight inpatient admission following presentation to emergency care, was limited to those occurring within 28 days of the earliest specimen date for a COVID-19 case. Deaths include those who died (a) within 28 days of the earliest specimen date or (b) within 60 days of the first specimen date or more than 60 days after the first specimen date with COVID-19 mentioned on the death certificate.

The rate of COVID-19 cases, hospitalisation, and deaths in fully vaccinated and unvaccinated groups was calculated using vaccine coverage data for each age group extracted at the mid-point of the reporting period from the National Immunisation Management Service.

## Results

The rate of a positive COVID-19 test varies by age and vaccination status. The rate of a positive COVID-19 test is substantially lower in vaccinated individuals compared to unvaccinated individuals up to the age of 29. In individuals aged greater than 30, the rate of a positive COVID-19 test is higher in vaccinated individuals compared to unvaccinated (Table 12). This is likely to be due to a variety of reasons, including differences in the population of vaccinated and unvaccinated people as well as differences in testing patterns.

The rate of hospitalisation within 28 days of a positive COVID-19 test increases with age, and is substantially greater in unvaccinated individuals compared to vaccinated individuals.

The rate of death within 28 days or within 60 days of a positive COVID-19 test increases with age, and again is substantially greater in unvaccinated individuals compared to fully vaccinated individuals.

## Interpretation of data

These data should be considered in the context of the vaccination status of the population groups shown in the rest of this report. In the context of very high vaccine coverage in the population, even with a highly effective vaccine, it is expected that a large proportion of cases, hospitalisations and deaths would occur in vaccinated individuals, simply because a larger proportion of the population are vaccinated than unvaccinated and no vaccine is 100% effective. This is especially true because vaccination has been prioritised in individuals who are more susceptible or more at risk of severe disease. Individuals in risk groups may also be more at risk of hospitalisation or death due to non-COVID-19 causes, and thus may be hospitalised or die **with** COVID-19 rather than **from** COVID-19.

The vaccination status of cases, inpatients and deaths should not be used to assess vaccine effectiveness because of differences in risk, behaviour and testing in the vaccinated and unvaccinated populations. The case rates in the vaccinated and unvaccinated populations are crude rates that do not take into account underlying statistical biases in the data. There are likely to be systematic differences between vaccinated and unvaccinated populations, for example:

- testing behaviour is likely to be different between people with different vaccination status, resulting in differences in the chances of being identified as a case
- many of those who were at the head of the queue for vaccination are those at higher risk from COVID-19 due to their age, their occupation, their family circumstances or because of underlying health issues
- people who are fully vaccinated and people who are unvaccinated may behave differently, particularly with regard to social interactions and therefore may have differing levels of exposure to COVID-19

- people who have never been vaccinated are more likely to have caught COVID-19 in the weeks or months before the period of the cases covered in the report. This gives them some natural immunity to the virus which may have contributed to a lower case rate in the past few weeks

These biases become more evident as more people are vaccinated and the differences between the vaccinated and unvaccinated population become systematically different in ways that are not accounted for without undertaken formal analysis of vaccine effectiveness. Vaccine effectiveness has been formally estimated from a number of different sources and is described on pages 4 to 12 in this report.

## Denominator

The potential sources of denominator data are either the National Immunisation Management Service (NIMS) or the Office for National Statistics (ONS) mid-year population estimates. Each source has its strengths and limitations which have been described in detail on the [NHS website](#) and [GOV.Wales](#).

NIMS may over-estimate denominators in some age groups, for example because people are registered with the NHS but may have moved abroad. However, as it is a dynamic register, such patients, once identified by the NHS, are able to be removed from the denominator. On the other hand, ONS data uses population estimates based on the 2011 census and other sources of data. When using ONS, vaccine coverage exceeds 100% of the population in some age groups, which would in turn lead to a negative denominator when calculating the size of the unvaccinated population.

UKHSA uses NIMS throughout its COVID-19 surveillance reports including in the calculation rates of COVID-19 infection, hospitalisation and deaths by vaccination status because it is a dynamic database of named individuals, where the numerator and the denominator come from the same source and there is a record of each individual's vaccination status. Additionally, NIMS contains key sociodemographic variables for those who are targeted and then receive the vaccine, providing a rich and consistently coded data source for evaluation of the vaccine programme. Large scale efforts to contact people in the register will result in the identification of people who may be overcounted, thus affording opportunities to improve accuracy in a dynamic fashion that feeds immediately into vaccine uptake statistics and informs local vaccination efforts.

## Sources of further information

UKHSA has published a [blog post to accompany this section of the report](#).

The Office of the Statistics Regulator [has published a blog post](#).



UKHSA has published a significant amount of [research into vaccine effectiveness](#) which is summarised on pages 4 to 12 of this report.

The Office for National Statistics has published research into the [risk of testing positive for COVID-19 by vaccination status](#), impact of Delta on viral burden and vaccine effectiveness (4), and the [risk of death by vaccination status](#).

**Table 9. COVID-19 cases by vaccination status between week 51 2021 and week 2 2022**

Please note that corresponding rates by vaccination status can be found in Table 12.

<b>Cases reported by specimen date between week 51 2021 (w/e 26/12/21) and week 02 2022 (w/e 16/01/22)</b>	<b>Total</b>	<b>Unlinked*</b>	<b>Not vaccinated</b>	<b>Received one dose (1 to 20 days before specimen date)</b>	<b>Received one dose, ≥21 days before specimen date</b>	<b>Second dose ≥14 days before specimen date<sup>1</sup></b>	<b>Third dose ≥14 days before specimen date<sup>1</sup></b>
	[These data should be interpreted with caution. See information below in footnote about the correct interpretation of these figures]						
Under 18	577,838	42,201	411,803	7,474	97,895	17,547	918
18 to 29	720,058	61,848	120,020	6,958	42,725	400,099	88,408
30 to 39	621,622	47,118	89,739	3,719	24,655	325,721	130,670
40 to 49	477,098	30,858	42,447	1,472	11,338	215,969	175,014
50 to 59	401,156	23,555	21,347	698	5,457	110,456	239,643
60 to 69	215,078	13,026	7,989	369	1,998	29,724	161,972
70 to 79	110,293	6,789	2,723	149	726	6,822	93,084
80 or over	60,423	5,483	1,683	60	636	6,437	46,124

\* Individuals whose NHS numbers were unavailable to link to the NIMS.

<sup>1</sup> In the context of very high vaccine coverage in the population, even with a highly effective vaccine, it is expected that a large proportion of cases, hospitalisations and deaths would occur in vaccinated individuals, simply because a larger proportion of the population are vaccinated than unvaccinated and no vaccine is 100% effective. This is especially true because vaccination has been prioritised in individuals who are more susceptible or more at risk of severe disease. Individuals in risk groups may also be more at risk of hospitalisation or death due to non-COVID-19 causes, and thus may be hospitalised or die with COVID-19 rather than because of COVID-19.

**Table 10. COVID-19 cases presenting to emergency care (within 28 days of a positive specimen) resulting in an overnight inpatient admission by vaccination status between week 51 2021 and week 2 2022**

Please note that corresponding rates by vaccination status can be found in Table 12.

Cases presenting to emergency care (within 28 days of a positive test) resulting in overnight inpatient admission, by specimen date between week 51 2021 (w/e 26/12/21) and week 02 2022 (w/e 16/01/22)	Total	Unlinked*	Not vaccinated	Received one dose (1 to 20 days before specimen date)	Received one dose, ≥21 days before specimen date	Second dose ≥14 days before specimen date <sup>1</sup>	Third dose ≥14 days before specimen date <sup>1</sup>
[These data should be interpreted with caution. See information below in footnote about the correct interpretation of these figures]							
Under 18	1,509	76	1,307	11	100	11	4
18 to 29	1,409	39	529	12	130	589	110
30 to 39	1,428	35	569	10	89	548	177
40 to 49	1,355	17	467	11	78	541	241
50 to 59	1,695	21	527	7	83	567	490
60 to 69	1,770	11	494	18	68	504	675
70 to 79	2,369	5	434	7	75	542	1,306
80 or over	3,477	5	425	3	79	825	2,140

\* Individuals whose NHS numbers were unavailable to link to the NIMS.

<sup>1</sup> In the context of very high vaccine coverage in the population, even with a highly effective vaccine, it is expected that a large proportion of cases, hospitalisations and deaths would occur in vaccinated individuals, simply because a larger proportion of the population are vaccinated than unvaccinated and no vaccine is 100% effective. This is especially true because vaccination has been prioritised in individuals who are more susceptible or more at risk of severe disease. Individuals in risk groups may also be more at risk of hospitalisation or death due to non-COVID-19 causes, and thus may be hospitalised or die with COVID-19 rather than because of COVID-19.

**Table 11. COVID-19 deaths (a) within 28 days and (b) within 60 days of positive specimen or with COVID-19 reported on death certificate, by vaccination status between week 51 2021 and week 2 2022**

Please note that corresponding rates by vaccination status can be found in Table 12.

(a)

Death within 28 days of positive COVID-19 test by date of death between week 51 2021 (w/e 26/12/21) and week 02 2022 (w/e 16/01/22)	Total**	Unlinked*	Not vaccinated	Received one dose (1 to 20 days before specimen date)	Received one dose, ≥21 days before specimen date	Second dose ≥14 days before specimen date <sup>1</sup>	Third dose ≥14 days before specimen date <sup>1</sup>
	[These data should be interpreted with caution. See information below in footnote about the correct interpretation of these figures]						
Under 18	9	0	9	0	0	0	0
18 to 29	27	1	15	0	2	8	1
30 to 39	74	0	40	0	3	27	4
40 to 49	111	1	53	0	8	39	10
50 to 59	283	4	123	1	16	108	31
60 to 69	567	11	198	1	27	218	112
70 to 79	840	4	218	3	40	309	266
80 or over	1,982	12	359	6	64	709	832

\* Individuals whose NHS numbers were unavailable to link to the NIMS.

\*\* number of deaths of people who had had a positive test result for COVID-19 and either died within 60 days of the first positive test or have COVID-19 mentioned on their death certificate.

<sup>1</sup> In the context of very high vaccine coverage in the population, even with a highly effective vaccine, it is expected that a large proportion of cases, hospitalisations and deaths would occur in vaccinated individuals, simply because a larger proportion of the population are vaccinated than unvaccinated and no vaccine is 100% effective. This is especially true because vaccination has been prioritised in individuals who are more susceptible or more at risk of severe disease. Individuals in risk groups may also be more at risk of hospitalisation or death due to non-COVID-19 causes, and thus may be hospitalised or die with COVID-19 rather than because of COVID-19.

(b)

<b>Death within 60 days of positive COVID-19 test by date of death between week 51 2021 (w/e 26/12/21) and week 02 2022 (w/e 16/01/22)</b>	<b>Total**</b>	<b>Unlinked*</b>	<b>Not vaccinated</b>	<b>Received one dose (1 to 20 days before specimen date)</b>	<b>Received one dose, ≥21 days before specimen date</b>	<b>Second dose ≥14 days before specimen date<sup>1</sup></b>	<b>Third dose ≥14 days before specimen date<sup>1</sup></b>
	[These data should be interpreted with caution. See information below in footnote about the correct interpretation of these figures]						
Under 18	10	0	10	0	0	0	0
18 to 29	32	2	18	1	2	8	1
30 to 39	100	1	53	0	6	34	6
40 to 49	137	2	66	0	10	48	11
50 to 59	376	8	159	1	22	142	44
60 to 69	698	13	236	1	30	278	140
70 to 79	1039	4	235	4	45	426	325
80 or over	2,347	14	378	6	67	900	982

\* Individuals whose NHS numbers were unavailable to link to the NIMS.

\*\* number of deaths of people who had had a positive test result for COVID-19 and either died within 60 days of the first positive test or have COVID-19 mentioned on their death certificate.

<sup>1</sup> In the context of very high vaccine coverage in the population, even with a highly effective vaccine, it is expected that a large proportion of cases, hospitalisations and deaths would occur in vaccinated individuals, simply because a larger proportion of the population are vaccinated than unvaccinated and no vaccine is 100% effective. This is especially true because vaccination has been prioritised in individuals who are more susceptible or more at risk of severe disease. Individuals in risk groups may also be more at risk of hospitalisation or death due to non-COVID-19 causes, and thus may be hospitalised or die with COVID-19 rather than because of COVID-19.

**Table 12. Unadjusted rates of COVID-19 infection, hospitalisation and death in vaccinated and unvaccinated populations.**

Please note that the following table should be read in conjunction with pages 30 to 33 of this report, and the footnotes provided on page 38.

	Cases reported by specimen date between week 51 2021 (w/e 26/12/21) and week 02 2022 (w/e 16/01/22)		Cases presenting to emergency care (within 28 days of a positive test) resulting in overnight inpatient admission, by specimen date between week 51 2021 (w/e 26/12/21) and week 02 2022 (w/e 16/01/22)		Death within 28 days of positive COVID-19 test by date of death between week 51 2021 (w/e 26/12/21) and week 02 2022 (w/e 16/01/22)		Death within 60 days of positive COVID-19 test by date of death between week 51 2021 (w/e 26/12/21) and week 02 2022 (w/e 16/01/22)	
	[see information on population bases and unadjusted rates in footnotes 1 and 2 below this table]							
	Unadjusted rates among persons vaccinated with at least 3 doses (per 100,000)	Unadjusted rates among persons not vaccinated (per 100,000) <sup>1,2</sup>	Unadjusted rates among persons vaccinated with at least 3 doses (per 100,000)	Unadjusted rates among persons not vaccinated (per 100,000) <sup>2</sup>	Unadjusted rates among persons vaccinated with at least 3 doses (per 100,000)	Unadjusted rates among persons not vaccinated (per 100,000) <sup>2</sup>	Unadjusted rates among persons vaccinated with at least 3 doses (per 100,000)	Unadjusted rates among persons not vaccinated (per 100,000) <sup>2</sup>
Under 18	2,295.7	3,990.1	10.0	12.7	0.0	0.1	0.0	0.1
18-29	3,460.5	3,853.3	4.3	17.0	0.0	0.5	0.0	0.6
30-39	3,857.1	3,251.7	5.2	20.6	0.1	1.4	0.2	1.9
40-49	4,012.4	2,573.9	5.5	28.3	0.2	3.2	0.3	4.0
50-59	3,995.9	2,133.3	8.2	52.7	0.5	12.3	0.7	15.9
60-69	3,070.0	1,499.8	12.8	92.7	2.1	37.2	2.7	44.3
70-79	2,062.8	1,129.7	28.9	180.1	5.9	90.4	7.2	97.5
≥80	1,842.6	1,374.8	85.5	347.2	33.2	293.3	39.2	308.8

<sup>1</sup> Comparing case rates among vaccinated and unvaccinated populations should not be used to estimate vaccine effectiveness against COVID-19 infection. Vaccine effectiveness has been formally estimated from a number of different sources and is summarised on pages 4 to 12 in this report.

The rates are calculated per 100,000 in people who have received either 2 doses of a COVID-19 vaccine or in people who have not received a COVID-19 vaccine. These figures are updated each week as the number of unvaccinated individuals and individuals vaccinated with 2 doses in the population changes.

The case rates in the vaccinated and unvaccinated populations are unadjusted crude rates that do not take into account underlying statistical biases in the data and there are likely to be systematic differences between these 2 population groups. For example:

- testing behaviour is likely to be different between people with different vaccination status, resulting in differences in the chances of being identified as a case
- many of those who were at the head of the queue for vaccination are those at higher risk from COVID-19 due to their age, their occupation, their family circumstances or because of underlying health issues
- people who are fully vaccinated and people who are unvaccinated may behave differently, particularly with regard to social interactions and therefore may have differing levels of exposure to COVID-19
- people who have never been vaccinated are more likely to have caught COVID-19 in the weeks or months before the period of the cases covered in the report. This gives them some natural immunity to the virus which may have contributed to a lower case rate in the past few weeks

<sup>2</sup> Case rates are calculated using NIMS - a database of named individuals from which the numerator and the denominator come from the same source and there is a record of each individual's vaccination status. Further information on the use of NIMS as the source of denominator data is presented on page 32 of this report.

Unadjusted case rates among persons vaccinated have been formatted in grey to further emphasise the caution to be employed when interpreting these data.

# Vaccine impact on proportion of population with antibodies to COVID-19

## Seroprevalence

The results from testing samples provided by healthy adult blood donors aged 17 years and older, supplied by the NHS Blood and Transplant (NHS BT collection) between weeks 35 2020 and week 52 2021 are summarised. As of week 44 2020, approximately 250 samples from each geographic NHS region are tested each week.

The COVID-19 vaccination campaign began on the 8 December 2020 (week 50) with a phased roll out by age and risk group. From the beginning of September 2021, a third dose was offered to individuals with severe immunosuppression. A booster dose was introduced from 16 September 2021 for individuals aged 50 years and over, frontline health and social care staff, individuals aged 16 to 49 with certain underlying health conditions and household contacts of immunosuppressed individuals. Eligibility for booster doses was extended to individuals aged 40 years and over from 22 November and from December to those aged 18 to 39 in a phased rollout by age group. Booster doses are generally given at least 6 months after the second dose, although the minimum interval was reduced to at least 3 months from the second or third dose in an effort to accelerate the roll out with the emergence of the Omicron variant.

Please note that this section will be updated monthly. Last update was published on 13 January 2022.

## Seroprevalence in blood donors aged 17 years and older

The results presented here are based on testing samples with Roche nucleoprotein (N) and Roche spike (S) antibody assays.

Nucleoprotein (Roche N) assays only detect post-infection antibodies, whereas spike (Roche S) assays will detect both post-infection antibodies and vaccine-induced antibodies. Thus, changes in seropositivity for the Roche N assay reflect the effect of natural infection. Increases in seropositivity as measured by S antibody reflect both infection and vaccination. Antibody responses to both targets reflect infection or vaccination occurring at least 2 to 3 weeks previously given the time taken to generate a COVID-19 antibody response. Currently donors are asked to defer donations for at least 7 full days post vaccination, and for at least 28 days post recovery if side-effects following vaccination or COVID-19 infection.

This report presents Roche N and Roche S seropositivity estimates on the same set of samples, using a 12-week rolling prevalence for national, age group and regional estimates. Seropositivity estimates are plotted using the mid-point of a 12-weekly rolling period that reduces to 8 weeks in the most recent weeks to allow for a more representative current estimate of seropositivity. However, this also means the data will reflect seroprevalence several

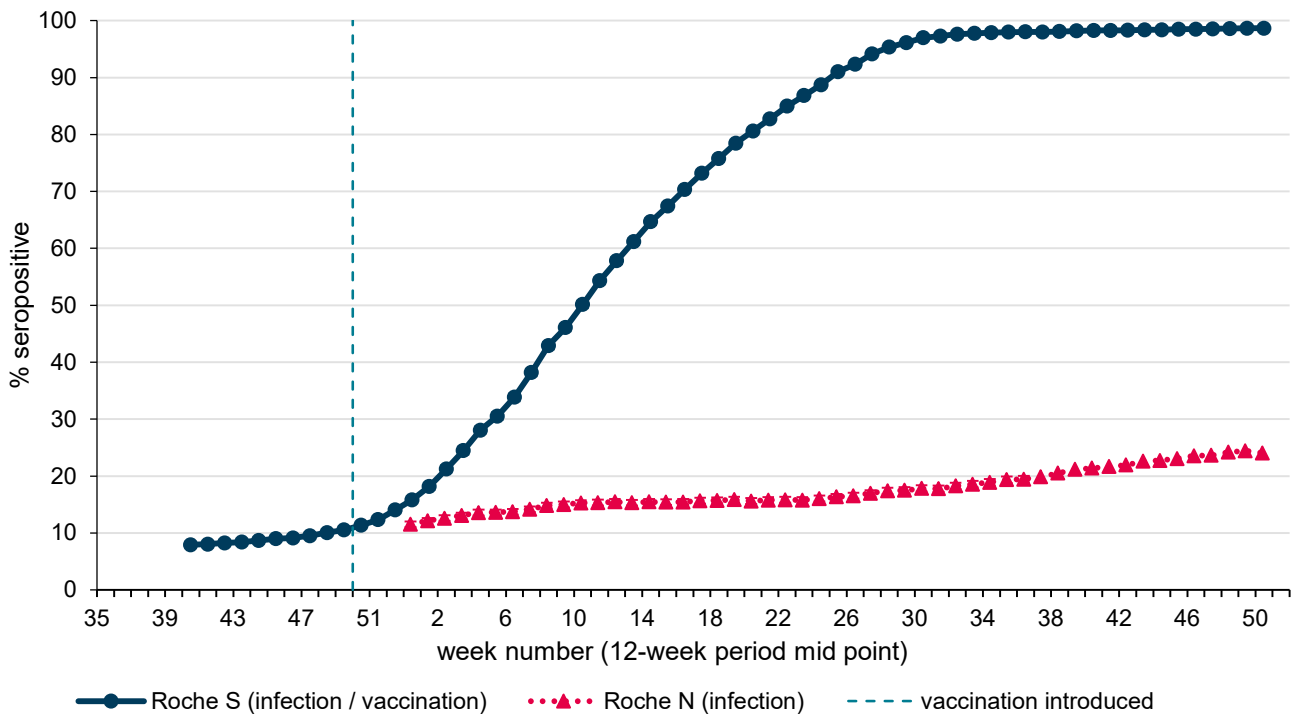
weeks previously, and are unlikely to reflect the recent increase in infection due to the Omicron variant. Seroprevalence estimates reported are based on seropositivity which are unadjusted for the sensitivity and specificity of the assays used.

## National prevalence

Overall population weighted (by age group, sex and NHS region) antibody prevalence among blood donors aged 17 years and older in England was 24.1% (95% CI 23.3% - 24.9%) using the Roche N assay and 98.7% (95% CI 98.4% - 98.9%) using the Roche S assay for the period 8 November to 31 December (weeks 45 to 52 2021). 2,855 out of 12,163 were Roche N positive and 11,848 out of 12,010 samples were Roche S positive. This compares with 20.5% (95% CI 19.9% - 21.1%) Roche N seropositivity and 98.1% (95% CI 97.9% - 98.3%) Roche S seropositivity for the period of 16 August to 7 November 2021 (weeks 33 to 44 2021).

Seropositivity (weighted by region, age group and sex) varies over time. Figure 6 shows the overall 12-weekly rolling proportion seropositive over time for the Roche N and Roche S assays. Seropositivity estimates are plotted weekly using the mid-point of a rolling 12-weekly period.

**Figure 6. Overall 12-weekly rolling SARS-CoV-2 antibody seroprevalence (% seropositive) in blood donors**

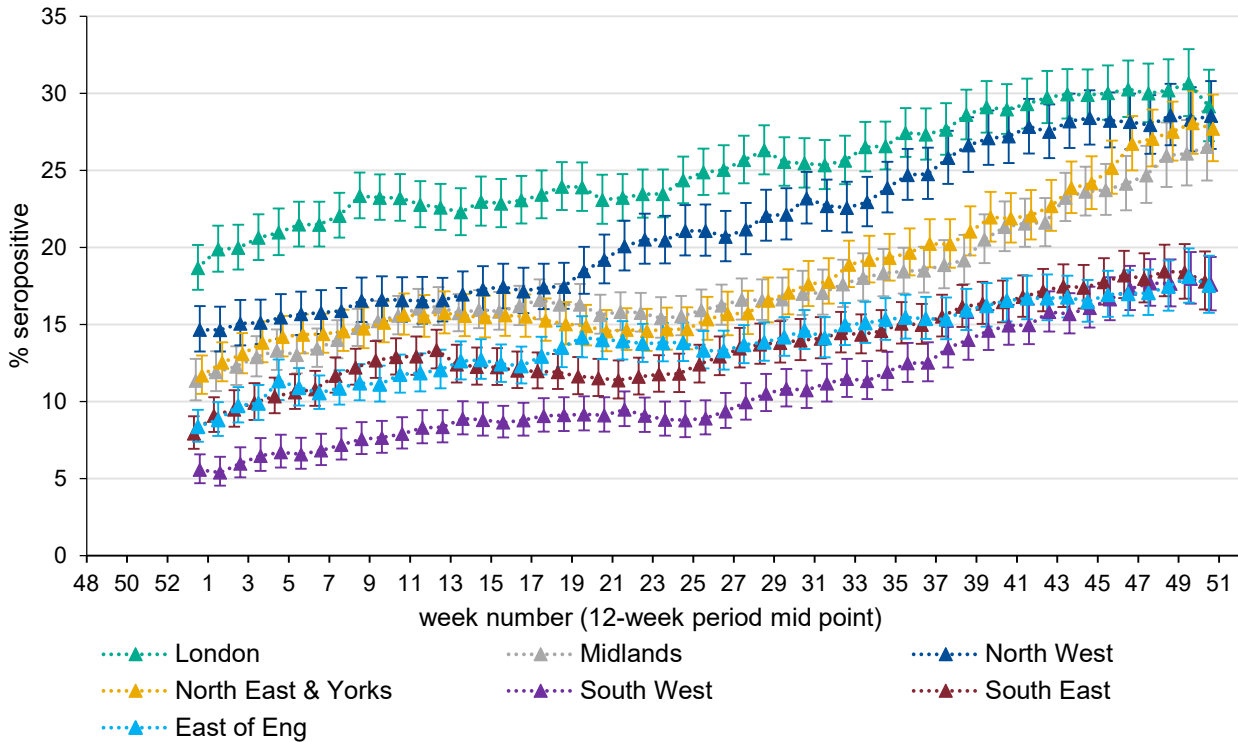




## Regional prevalence of infection over time

Seropositivity (weighted by age group and sex) using the Roche N assay which detects infection only, varies by region (Figure 7).

**Figure 7. 12-weekly rolling SARS-CoV-2 antibody seroprevalence (% seropositive) in blood donors by region, using Roche N test; error bars show 95% confidence intervals.**



**Table 13. Roche N seropositivity (95%CI) estimates by NHS region**

NHS region	Weeks 33 to 44	Weeks 45 to 52
East of England	15.9% (14.6% - 17.3%)	17.5% (15.8% - 19.5%)
London	28.6% (27.0% - 30.2%)	29.2% (26.9% - 31.5%)
Midlands	19.2% (17.6% - 20.8%)	26.5% (24.3% - 28.8%)
North East and Yorkshire	21.0% (19.5% - 22.7%)	27.7% (25.6% - 29.9%)
North West	26.6% (24.9% - 28.4%)	28.5% (26.4% - 30.8%)
South East	16.1% (14.8% - 17.6%)	17.8% (16.0% - 19.7%)
South West	14.0% (12.7% - 15.4%)	17.6% (15.9% - 19.4%)

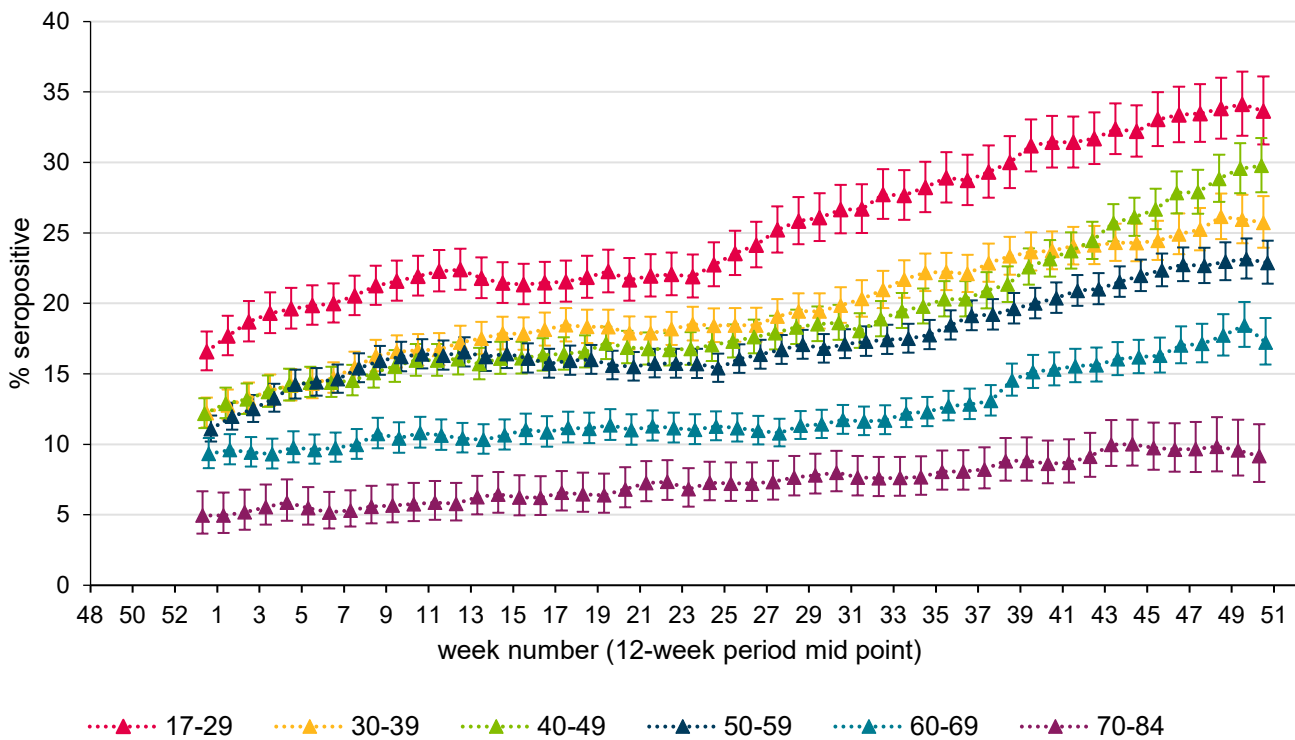
Increases in Roche N seropositivity have recently been observed across all regions (Table 13) compared to the previous 12-week period with the most notable increases in the Midlands and North East and Yorkshire regions.

London has consistently seen the highest Roche N seropositivity although levels have remained relatively stable in recent weeks. Seropositivity in the North West has continued to increase and is approaching similar levels to London. Whilst seropositivity has consistently been lowest in the South West, recent increases have resulted in the region reaching similar levels to those observed in the East of England and the South East. With the emergence of the Omicron variant considerable increases in COVID-19 case rates in England have been observed across all regions with the highest case rates are in the North West and North East ([Weekly national Influenza and COVID-19 surveillance report week 1](#)). However the impact of the Omicron wave is not currently evident in the most recent seroprevalence data, given that it takes approximately 2 to 3 weeks to developing an antibody response following infection and the 28 day deferral for individuals to donate following infection.

### Prevalence by age group

Seropositivity estimates by age group using the Roche N assay are presented below.

**Figure 8. Population weighted 12-weekly rolling SARS-CoV-2 antibody seroprevalence (% seropositive) in blood donors from the Roche N assay by age group**



Based on testing samples using the Roche N assay ([Figure 8](#)) as a marker of infection, the highest seropositivity continues to be observed in those aged 17 to 29 and the lowest in those aged 70 to 84.

**Table 14. Roche N seropositivity (95%CI) estimates by age group**

Age group	Weeks 33 to 44	Weeks 45 to 52
17-29	30.0% (28.2% - 31.9%)	33.6% (31.3% - 36.1%)
30-39	23.3% (22.0% - 24.7%)	25.7% (23.9% - 27.6%)
40-49	21.3% (20.1% - 22.6%)	29.8% (27.9% - 31.7%)
50-59	19.6% (18.6% - 20.7%)	22.9% (21.4% - 24.4%)
60-69	14.5% (13.4% - 15.7%)	17.2% (15.7% - 19.0%)
70-84	8.8% (7.4% - 10.4%)	9.2% (7.3% - 11.4%)

Increases in Roche N seropositivity have recently been observed across all age groups (Table 14) compared to the previous 12-week period. In the most recent period, the largest increase in seropositivity was observed in those aged 40 to 49, this age group has the second highest seropositivity after the 17 to 29 year olds. In England, COVID-19 case rates for weeks 48 to 52 increased across all age groups with the highest rates in individuals aged 20 to 29 followed by 30 to 39 years olds ([Weekly national Influenza and COVID-19 surveillance report week 1](#)).

Roche S seropositivity in blood donors has plateaued and is now over 96% across all age groups.

Seropositivity estimates for S antibody in blood donors are likely to be higher than would be expected in the general population and this probably reflects the fact that donors are more likely to be vaccinated. Seropositivity estimates for N antibody will underestimate the proportion of the population previously infected due to (i) blood donors are potentially less likely to be exposed to natural infection than age matched individuals in the general population (ii) waning of the N antibody response over time and (iii) recent observations from UK Health Security Agency (UKHSA) surveillance data that N antibody levels are lower in individuals who acquire infection following 2 doses of vaccination. These lower N antibody responses in individuals with breakthrough infections (post-vaccination) compared to primary infection likely reflect the shorter and milder infections in these patients. Patients with breakthrough infections do have significant increases in S antibody levels consistent with boosting of their antibody levels.

Vaccination has made an important contribution to the overall Roche S increases observed since the roll out of the vaccination programme, initially amongst individuals aged 50 years and above who were prioritised for vaccination as part of the phase 1 programme and subsequently in younger adults as part of phase 2 of the vaccination programme. The impact of the booster vaccination programme can be assessed by monitoring Roche S antibody levels across the population over time.

## Roche S levels by age group and month

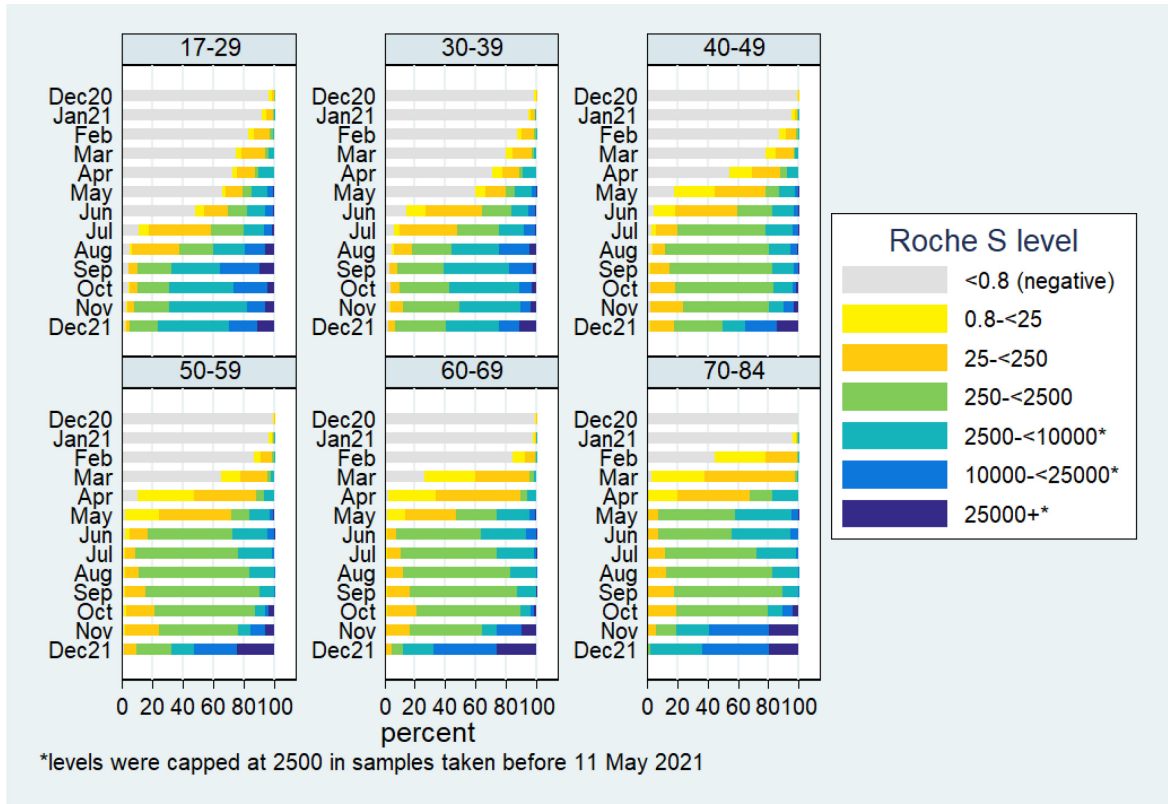
The Roche S assay that the UKHSA uses for serological surveillance is fully quantitative, meaning that it measures the level of antibodies in a blood sample; an antibody level above 0.8 AU/ml (approximately 1 IU/ml using the WHO standard) is deemed positive. The PHE/ UKHSA surveillance over the past few months has found that over 97% of the population of blood donors test positive for S-antibodies, which may have resulted from either COVID-19 infection or vaccination. With such high seropositivity, it is important to look at population antibody levels in order to assess the impact of the vaccination booster programme. In the previous report, groupings of antibody level ranges were updated to better illustrate changes over time.

[Figure 9](#) shows monthly categorised Roche S levels in N-antibody negative individuals by age group. Almost all tested S-antibody negative during December. In the 3 oldest age groups, the impact of first vaccine dose, then second vaccine dose, can be seen from January through June, as the profile of population antibody levels increases. Then from June through September the profile of antibody levels in these cohorts gradually decreases, consistent with waning. During October there was a small increase in percentage of donors with very high antibody levels of 10,000+ AU/ml for the 50 to 84 age group, following the initiation of the booster programme. In November the proportion of donors with very high antibody levels of 10,000+ AU/ml increased further particularly in those aged 70 to 84 years. In December large increases were observed in the proportion of donors aged 50 to 69 with very high antibody levels of 10,000+ AU/ml. Increases were also observed in younger age groups as the booster programme was accelerated due to the emergence of the Omicron variant. The higher profile of antibody levels in the youngest age group, is likely a result of a combination of factors including stronger immune responses in younger individuals and the higher antibody levels produced after mRNA vaccination.

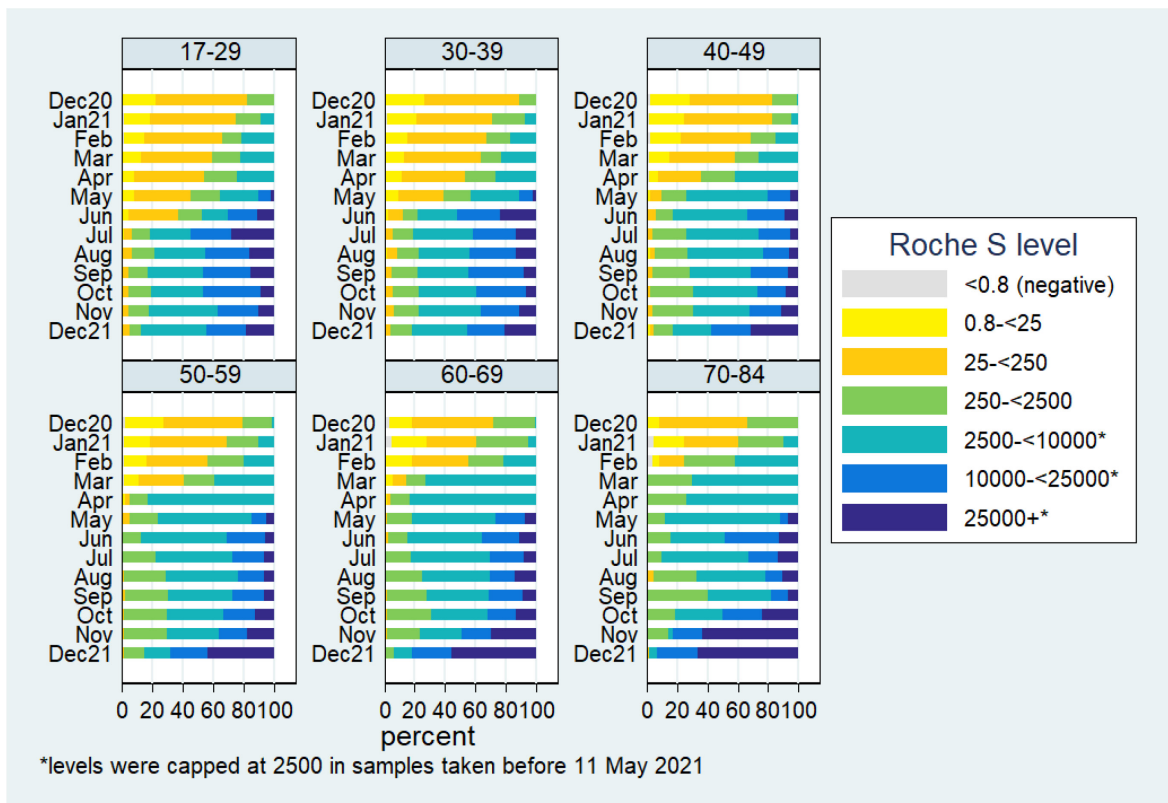
[Figure 10](#) shows categorised Roche S levels in N-antibody positive individuals, those likely to have experienced past infection. Pre-vaccination antibody levels will be influenced by time since infection, variant and severity of infection, as well as individual factors such as underlying health conditions and age. At the start of the vaccination rollout in December 2020 antibody levels typically sat within the range of 0.8 to 2,500 AU/ml, after vaccination antibody levels typically exceed 2,500 AU/ml. In November more than half of donors aged 70 to 84 years had very high antibody levels of 25,000+ AU/ml. In December increases in the proportion of donors with very high antibody levels of 25,000+ AU/ml were observed across all age groups with the largest increases in the 50 to 69 age groups. Comparing [Figure 9](#) with [Figure 10](#), the overall higher profile of antibody levels in those who have experienced past infection is evident; both vaccination post infection and breakthrough infection following vaccination are expected to boost existing antibody levels.

Researchers across the globe are working to better understand what antibody levels mean in terms of protection against COVID-19. Current thinking is that there is no threshold antibody level that offers complete protection against infection, but instead that higher antibody levels are likely to be associated with lower probability of infection.

**Figure 9. Categorical Roche S antibody levels by age group and month in N negative samples, December 2020 to December 2021**



**Figure 10. Categorical Roche S antibody levels by age group and month in N positive samples, December 2020 to December 2021**



## Summary of impact on hospitalisations, infections and mortality

UKHSA previously reported on the number of hospitalisations directly averted by vaccination. In total, around 261,500 hospitalisations have been prevented in those aged 45 years and over up to 19 September 2021.

UKHSA and University of Cambridge MRC Biostatistics Unit previously reported on the direct and indirect impact of the vaccination programme on infections and mortality. Estimates suggest that 127,500 deaths and 24,144,000 infections have been prevented as a result of the COVID-19 vaccination programme, up to 24 September.

Neither of these models will be updated going forward. This is due to these models being unable to account for the interventions that would have been implemented in the absence of vaccination. Consequently, over time the state of the actual pandemic and the no-vaccination pandemic scenario have become increasingly less comparable. For further context surrounding this figure and for previous estimates, please see previous vaccine surveillance reports.

## References

1. Public Health England. '[COVID-19: vaccine surveillance strategy 2021](#)'
2. Medicines and Healthcare Products Regulatory Agency. '[Coronavirus vaccine – weekly summary of Yellow Card reporting 2021](#)'
3. Andrews N, Stowe J, Kirsebom F, Toffa S, Rickeard T, Gallagher E, Gower C, Kall M, Groves N, O'Connell A, Simons D, Blomquist P B, Dabrera G, Myers R, Ladhani S N, Amirthalingam G, Gharbia S, Barrett J C, Elson R, Ferguson N, Zambon M, Campbell CNJ, Brown K, Hopkins S, Chand M, Ramsay M, Lopez Bernal J. '[Effectiveness of COVID-19 vaccines against the Omicron \(B.1.1.529\) variant of concern](#)' medRxiv 2021.12.14.21267615
4. Whitaker H, Tsang R, Byford R, Andrews N, Sherlock J, Sebastian Pillai P and others. '[Pfizer-BioNTech and Oxford AstraZeneca COVID-19 vaccine effectiveness and immune response among individuals in clinical risk groups](#)'
5. Amirthalingam, G., Bernal, J.L., Andrews, N.J. et al. '[Serological responses and vaccine effectiveness for extended COVID-19 vaccine schedules in England](#)'. Nat Commun 12, 7217 (2021). <https://doi.org/10.1038/s41467-021-27410-5>
6. Lopez Bernal J, Andrews N, Gower C, Robertson C, Stowe J, Tessier E and others. '[Effectiveness of the Pfizer-BioNTech and Oxford-AstraZeneca vaccines on COVID-19-related symptoms, hospital admissions, and mortality in older adults in England: test negative case-control study](#).' British Medical Journal 2021: volume 373, n1,088
7. Vasileiou E, Simpson CR, Robertson C, Shi T, Kerr S, Agrawal U and others. 'Effectiveness of first dose of COVID-19 vaccines against hospital admissions in Scotland: national prospective cohort study of 5.4 million people.' 2021
8. Hyams C, Marlow R, Maseko Z, King J, Ward L, Fox K and others. '[Effectiveness of BNT162b2 and ChAdOx1 nCoV-19 COVID-19 vaccination at preventing hospitalisations in people aged at least 80 years: a test-negative, case-control study](#).' Lancet Infectious Diseases 2021
9. Ismail SA, Vilaplana TG, Elgohari S, Stowe J, Tessier E, Andrews N and others. '[Effectiveness of BNT162b2 mRNA and ChAdOx1 adenovirus vector COVID-19 vaccines on risk of hospitalisation among older adults in England: an observational study using surveillance data](#).' PHE Preprints. 2021
10. Lopez Bernal J, Andrews N, Gower C, Stowe J, Tessier E, Simmons R and others. '[Effectiveness of BNT162b2 mRNA vaccine and ChAdOx1 adenovirus vector vaccine on mortality following COVID-19](#).' medRxiv. 2021
11. Andrews N, Tessier E, Stowe J, Gower C, Kirsebom F, Simmons R and others. '[Vaccine effectiveness and duration of protection of Comirnaty, Vaxzevria and Spikevax against mild and severe COVID-19 in the UK](#)'. medRxiv. 2021.
12. Pritchard E, Matthews PC, Stoesser N, Eyre DW, Gethings O, Vihta K-D and others. 'Impact of vaccination on SARS-CoV-2 cases in the community: a population-based study using the UK's COVID-19 Infection Survey.' medRxiv 2021: 2021.04.22.21255913

13. Hall VJ, Foulkes S, Saei A, Andrews N, Oguti B, Charlett A and others. '[COVID-19 vaccine coverage in health-care workers in England and effectiveness of BNT162b2 mRNA vaccine against infection \(SIREN\): a prospective, multicentre, cohort study.](#)' Lancet 2021
14. Shrotri M, Krutikov M, Palmer T, Giddings R, Azmi B, Subbarao S and others. '[Vaccine effectiveness of the first dose of ChAdOx1 nCoV-19 and BNT162b2 against SARS-CoV-2 infection in residents of long-term care facilities in England \(VIVALDI\): a prospective cohort study.](#)' Lancet Infectious Diseases 2021
15. Menni C, Klaser K, May A, Polidori L, Capdevila J, Louca P and others. 'Vaccine side-effects and SARS-CoV-2 infection after vaccination in users of the COVID Symptom Study app in the UK: a prospective observational study.' The Lancet Infectious Diseases 2021
16. Harris RJ, Hall JA, Zaidi A, Andrews NJ, Dunbar JK, Dabrera G. '[Effect of Vaccination on Household Transmission of SARS-CoV-2 in England](#)' NEJM 2021
17. V Shah AS, Gribben C, Bishop J, Hanlon P, Caldwell D, Wood R and others. 'Effect of vaccination on transmission of COVID-19: an observational study in healthcare workers and their households.' medRxiv 2021: 2021.03.11.21253275
18. Eyre DW, Taylor D, Purver M, Chapman D, Fowler T, Pouwels KB, Walker S, Peto T. '[The impact of SARS-CoV-2 vaccination on Alpha and Delta variant transmission](#)' medRxiv 2021: 2021.09.28.21264260
19. Clifford S, Waight P, Hackman J, Hue S, Gower CM, Kirsebom FCM, Skarnes C, Letley L, Lopez Bernal J, Andrews N, Flasche S, Miller E. '[Effectiveness of BNT162b2 and ChAdOx1 against SARS-CoV-2 household transmission: a prospective cohort study in England](#)' medRxiv 2021.11.24.21266401; doi: <https://doi.org/10.1101/2021.11.24.21266401>
20. UKHSA, [COVID-19 vaccine weekly surveillance report week 42](#), 21 October 2021
21. University of Edinburgh, [Outputs and information for the public.](#)
22. [Public Health Wales, Wales COVID-19 Vaccination enhanced surveillance, Equality Report 9, 28 October 2021](#)
23. Centers for Disease Control and Prevention, [Vaccine Pregnancy Registry.](#)
24. Goldshtein I and others. '[Association between BNT162b2 vaccination and incidence of SARS-CoV-2 infection in pregnant women.](#)' Journal of the American Medical Association, 2021, volume 326 issue 8, pages 728-35
25. Dagan N and others. '[Effectiveness of the BNT162b2 mRNA COVID-19 vaccine in pregnancy.](#)' Nature Medicine. 2021, volume 27, issue 10, pages 1693-5
26. Gray KJ and others. '[Coronavirus disease 2019 vaccine response in pregnant and lactating women: a cohort study.](#)' American Journal of Obstetrics and Gynecology. 2021, volume 225, issue 3: pages 303 e1- e17.
27. [Key information on COVID-19 in pregnancy | UKOSS | NPEU \(ox.ac.uk\)](#)
28. Public Health Scotland, [Scottish Intensive Care Society Audit Group report on COVID-19, 23 September 2021](#)
29. Stock S and others. '[COVID-19 vaccination rates and SARS-CoV-2 infection in pregnant women in Scotland.](#)' Research Square, 2021



30. Shimabukuro TT and others. [Preliminary findings of mRNA COVID-19 vaccine safety in pregnant persons](#). New England Journal of Medicine, 2021, volume 384, issue 24, pages 2273-82
31. Kharbada EO and others. [Spontaneous abortion following COVID-19 vaccination during pregnancy](#). Journal of the American Medical Association, 2021, volume 326, issue 16, pages 1629-1631
32. Magnus MC and others. [COVID-19 vaccination during pregnancy and first-trimester miscarriage](#). New England Journal of Medicine 2021
33. Vousden N and others. [Impact of SARS-CoV-2 variant on the severity of maternal infection and perinatal outcomes: Data from the UK Obstetric Surveillance System national cohort](#). medRxiv, 2021
34. Zauche LH and others. Receipt of mRNA COVID-19 vaccines and risk of spontaneous abortion. New England Journal of Medicine, 2021 volume 385, issue 16, pages 1533-5
35. Kadiwar S and others. [Were pregnant women more affected by COVID-19 in the second wave of the pandemic?](#). The Lancet, 2021, volume 397 issue 10284, pages 1539-40
36. Zambrano LD and others. [Update: characteristics of symptomatic women of reproductive age with laboratory-confirmed SARS-CoV-2 infection by pregnancy status - United States, January 22 to October 3](#)
37. Wilson EB. 'Probable inference, the law of succession, and statistical inference.' The Journal of the American Statistical Association, 1927;22:209-12

# About the UK Health Security Agency

UKHSA is responsible for protecting every member of every community from the impact of infectious diseases, chemical, biological, radiological and nuclear incidents and other health threats. We provide intellectual, scientific and operational leadership at national and local level, as well as on the global stage, to make the nation health secure.

[UKHSA](#) is an executive agency, sponsored by the [Department of Health and Social Care](#).

© Crown copyright 2022

Published: 20 January 2022  
Publishing reference: GOV-11140



You may re-use this information (excluding logos) free of charge in any format or medium, under the terms of the Open Government Licence v3.0. To view this licence, visit [OGI](#). Where we have identified any third party copyright information you will need to obtain permission from the copyright holders concerned.



UKHSA supports the  
Sustainable Development Goals

