



OPEN

Stay-at-home policy is a case of exception fallacy: an internet-based ecological study

R. F. Savaris^{1,4,5✉}, G. Pumi², J. Dalzochio³ & R. Kunst³

A recent mathematical model has suggested that staying at home did not play a dominant role in reducing COVID-19 transmission. The second wave of cases in Europe, in regions that were considered as COVID-19 controlled, may raise some concerns. Our objective was to assess the association between staying at home (%) and the reduction/increase in the number of deaths due to COVID-19 in several regions in the world. In this ecological study, data from www.google.com/covid19/mobility/, ourworldindata.org and covid.saude.gov.br were combined. Countries with >100 deaths and with a Healthcare Access and Quality Index of ≥ 67 were included. Data were preprocessed and analyzed using the difference between number of deaths/million between 2 regions and the difference between the percentage of staying at home. The analysis was performed using linear regression with special attention to residual analysis. After preprocessing the data, 87 regions around the world were included, yielding 3741 pairwise comparisons for linear regression analysis. Only 63 (1.6%) comparisons were significant. With our results, we were not able to explain if COVID-19 mortality is reduced by staying at home in ~98% of the comparisons after epidemiological weeks 9 to 34.

By late January, 2021, approximately 2.1 million people worldwide had died from the new coronavirus (COVID-19)¹. Wearing masks, taking personal precautions, testing for COVID-19 and social distancing have been advocated for controlling the pandemic²⁻⁴. To achieve source control and stop transmission, social distancing has been interpreted by many as staying at home. Such policies across multiple jurisdictions were suggested by some experts⁵. These measures were supported by the World Health Organization^{6,7}, local authorities⁸⁻¹⁰, and encouraged on social media platforms¹¹⁻¹³.

Some mathematical models and meta-analyses have shown a marked reduction in COVID-19 cases¹⁴⁻¹⁹ and deaths^{20,21} associated with lockdown policies. Brazilian researchers have published mathematical models of spreading patterns²² and suggested implementing social distancing measures and protection policies to control virus transmission²³. By May 5th, 2020, an early report, using the number of curfew days in 49 countries, found evidence that lockdown could be used to suppress the spread of COVID-19²⁴. Measures to address the COVID-19 pandemic with Non-Pharmacological Interventions (NPIs) were adopted after Brazil enacted Law No. 13979²⁵, and this was followed by many states such as Rio de Janeiro²⁶, the Federal District of Brasília (Decree No. 40520, dated March 14th, 2020)²⁷, the city of São Paulo (Decree No. 59.283, dated March 16th, 2020)²⁸, and the State of Rio Grande do Sul (Decree No. 55240/2020, dated May 10th, 2020)²⁹. It was expected that, with these actions, the number of deaths by COVID-19 would be reduced. Of note, the country's most populous state, São Paulo, adopted rigorous quarantine measures and put them into effect on March 24th, 2020²⁸. Internationally, Peru adopted the world's strictest lockdown³⁰.

Recently, Google LLC published datasets indicating changes in mobility (compared to an average baseline before the COVID-19 pandemic). These reports were created with aggregated, anonymized sets of daily and dynamic data at country and sub-regional levels drawn from users who had enabled the Location History setting on their cell phones. These data reflect real-world changes in social behavior and provide information on mobility trends for places like grocery stores, pharmacies, parks, public transit stations, retail and recreation locations,

¹School of Medicine, Department of Obstetrics and Gynecology, Universidade Federal do Rio Grande do Sul, Rua Ramiro Barcelos 2400, Porto Alegre, RS CEP 90035-003, Brazil. ²Mathematics and Statistics Institute and Programa de Pós-Graduação em Estatística, Universidade Federal do Rio Grande do Sul, 9500, Bento Gonçalves Avenue, Porto Alegre, RS 91509-900, Brazil. ³Applied Computing Graduate Program, University of Vale do Rio dos Sinos (UNISINOS), Av. Unisinos, 950, São Leopoldo, RS 93022-750, Brazil. ⁴Serv. Ginecologia e Obstetrícia, Hospital de Clínicas de Porto Alegre, Rua Ramiro Barcelos 2350, Porto Alegre, RS CEP 90035-903, Brazil. ⁵Postgraduate of BigData, Data Science and Machine Learning Course, Unisinos, Porto Alegre, RS, Brazil. ✉email: rsavaris@hcpa.edu.br

residences, and workplaces, when compared to the baseline period prior to the pandemic³¹. Mobility in places of residence provides information about the “time spent in residences”, which we will hereafter call “staying at home” and use as a surrogate for measuring adherence to stay-at-home policies.

Studies using Google COVID-19 Community Mobility Reports and the daily number of new COVID-19 cases have shown that over 7 weeks a strong correlation between staying at home and the reduction of COVID-19 cases in 20 counties in the United States³²; COVID-19 cases decreased by 49% after 2 weeks of staying at home³³; the incidence of new cases/100,000 people was also reduced³⁴; social distancing policies were associated with reduction in COVID-19 spread in the US³⁵; as well as in 49 countries around the world²⁴. A recent report using Brazilian and European data has shown a correlation between NPI stringency and the spread of COVID-19^{36,37}; these analyses are debatable, however, due to their short time span and the type of time series behavior³⁸, or for their use of Pearson’s correlation in the context of non-stationary time series³⁵. The same statistical tools cannot be applied to stationary and non-stationary time series alike³⁹, and the latter is the case with this COVID-19 data. A 2020 Cochrane systematic review of this topic reported that they were not completely certain about this evidence for several reasons. The COVID-19 studies based their models on limited data and made different assumptions about the virus¹⁷; the stay-at-home variable was analyzed as a binary indicator⁴⁰; and the number of new cases could have been substantially undocumented⁴¹; all which may have biased the results. A sophisticated mathematical model based on a high-dimensional system of partial differential equations to represent disease spread has been proposed⁴². According to this model, staying at home did not play a dominant role in disease transmission, but the combination of these, together with the use of face masks, hand washing, early-case detection (PCR test), and the use of hand sanitizers for at least 50 days could have reduced the number of new cases. Finally, after 2 months, the simulations that drove the world to lockdown have been questioned⁴³. These studies applied relatively complex epidemiological models with unrealistic assumptions or parameters that were either user-chosen or not deemed to work properly. Furthermore, the effects in the death rates were directly inferred from the aftermath of a given intervention without a control group. Finally, the temporal delay between the introduction of a certain intervention and the actual measurable variation in death rates was not properly taken into account^{44,45}.

The rationale we are looking for is the association between two variables: deaths/million and the percentage of people who remained in their residences. Comparison, however, is difficult due to the non-stationary nature of the data. To overcome these problems, we proposed a novel approach to assess the association between staying at home values and the reduction/increase in the number of deaths due to COVID-19 in several regions around the world. If the variation in the difference between the number of deaths/million in two countries, say A and B, and the variation in the difference of the staying at home values between A and B present similar patterns, this is due to an association between the two variables. In contrast, if these patterns are very different, this is evidence that staying at home values and the number of deaths/million are not related (unless, of course, other unaccounted for factors are at play). In view of this, the proposed approach avoids altogether the problems enumerated above, allowing a new approach to the problem.

After more than 25 epidemiological weeks of this pandemic, verifying if staying at home had an impact on mortality rates is of particular interest. A PUBMED search with the terms “COVID-19” AND (Mobility) (search made on September 8th, 2020) yielded 246 articles; of these, 35 were relevant to mobility measures and COVID-19, but none compared mobility reduction to mortality rates.

Results

A flowchart of the data manipulation is depicted in Fig. 1. Briefly, Google COVID-19 Community Mobility Report data between February 16th and August 21st, 2020, yielded 138 separate countries and their regions. The website Our World in Data provided data on 212 countries (between December 31st, 2019, and August 26th, 2020), and the Brazilian Health Ministry website provided data on all states ($n = 27$) and cities ($n = 5,570$) in Brazil (February 25th to August 26th, 2020).

After data compilation, a total of 87 regions and countries were selected: 51 countries, 27 States in Brazil, six major Brazilian State capitals [Manaus, Amazonas (AM), Fortaleza, Ceará (CE), Belo Horizonte, Minas Gerais (MG), Rio de Janeiro, Rio de Janeiro (RJ), São Paulo, São Paulo (SP) and Porto Alegre, Rio Grande do Sul (RS)], and three major cities throughout the world (Tokyo, Berlin and New York) (Fig. 1).

Characteristics of these 87 regions are presented in Table 1 (further details are in Supplemental Material—Characteristics of Regions).

Comparisons. The restrictive analysis between controlled and not controlled areas yielded 33 appropriate comparisons, as shown in Table 2. Only one comparison out of 33 (3%)—state of Roraima (Brazil) versus state of Rondonia (Brazil)—was significant (p -value = 0.04). After correction for residual analysis, it did not pass the autocorrelation test (Lagrange Multiplier test = 0.04). (Further details are in Supplemental Material—Restrictive Analysis).

The global comparison yielded 3,741 combinations; from these, 184 (4.9%) had a p -value < 0.05, after correcting for False Discovery Rate (Table S1). After performing the residual analysis, by testing for cointegration between response and covariate, normality of the residuals, presence of residual autocorrelation, homoscedasticity, and functional specification, only 63 (1.6%) of models passed all tests (Table S2). Closer inspection of several cases where the model did not pass all the tests revealed a common factor: the presence of outliers, mostly due to differences in the epidemiological week in which deaths started to be reported. A heat map showing the comparison between the 87 regions is presented in Fig. 2.

Characteristics of these 87 regions are presented in Table 1 (further details are in Auxiliary Supplementary Material—Characteristics of Regions).

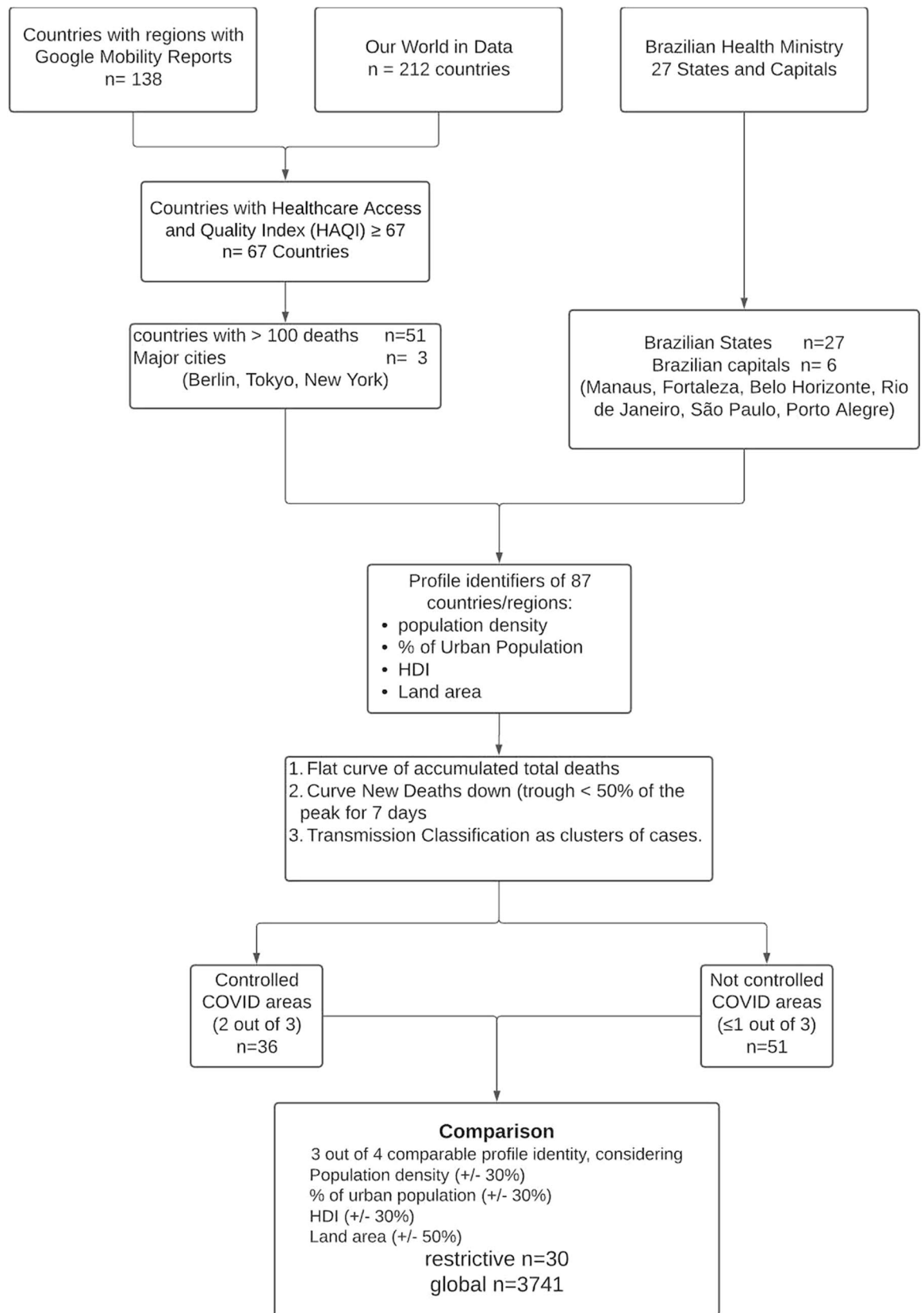


Figure 1. Flow chart of the data setup (further details are in Auxiliary Supplementary Material—Flow chart).

Region/Country	Density people/km ²	Urban Pop (%)	HDI	Population	Land area (km ²)
Controlled areas					
Austria	109	57	0.914	9,014,380	82,409
Bahrain	2,239	89	0.838	1,709,919	760
Belgium	383	98	0.919	11,597,489	30,280
Berlin	4,118	100	0.950	3,669,491	891
Canada	4	81	0.922	37,793,085	9,093,510
Czech Republic	139	74	0.891	10,712,102	78,866
Denmark	137	88	0.930	5,795,391	42,430
Finland	18	86	0.925	5,542,073	303,890
City of Fortaleza, Ceará, Brazil	7,786	100	0.754	2,686,612	312
France	119	82	0.891	65,296,176	547,557
Germany	240	76	0.939	83,825,861	348,560
Greece	81	85	0.870	10,414,904	128,900
Hungary	107	72	0.845	9,656,450	90,530
Ireland	72	63	0.942	4,946,213	68,890
Italy	206	69	0.883	60,447,728	294,140
Japan	347	92	0.915	126,414,795	364,555
Kuwait	240	100	0.808	4,280,111	17,820
Macedonia	83	59	0.759	2,083,360	25,220
City of Manaus, Amazonas, Brazil	158	100	0.737	2,219,580	11,401
Netherlands	508	92	0.934	17,140,821	33,720
New York City	10,194	100	0.941	8,336,817	784
Norway	15	83	0.954	5,427,784	365,268
Portugal	111	66	0.850	10,191,976	91,590
City of Rio de Janeiro, RJ, Brazil	5,266	100	0.799	6,747,815	1,200
Russia	9	74	0.824	145,944,331	16,376,870
Slovenia	103	55	0.902	2,078,983	20,140
South Korea	527	82	0.906	51,276,136	97,230
Spain	94	80	0.893	46,757,635	498,800
State of Acre	4	73	0.663	894,470	164,124
State of Amazonas	2	79	0.674	4,207,714	1,559,169
State of Pará	6	68	0.646	8,602,865	1,245,871
State of Roraima	2	76	0.707	631,181	223,645
Sweden	25	88	0.937	10,109,031	410,340
Switzerland	219	74	0.946	8,664,406	39,516
Tokyo, Japan	6,158	100	0.941	13,491,000	2,191
United Kingdom	279	83	0.920	67,886,011	241,930
Not controlled areas					
Argentina	17	93	0.83	45,259,525	2,736,690
Australia	3	86	0.938	25,545,026	7,682,300
Belarus	47	79	0.817	9,448,832	202,910
City of Belo Horizonte, MG, Brazil	7167	100	0.81	2,521,564	331
Bosnia and Herzegovina	64	52	0.769	3,277,541	51,000
Bulgaria	64	76	0.861	6,940,012	108,560
Chile	26	85	0.847	19,141,470	743,532
Colombia	46	80	0.761	50,965,881	1,109,500
Costa Rica	100	80	0.794	5,101,269	51,060
Croatia	73	58	0.837	4,101,200	55,960
Brasilia, FD Brazil	444.66	96.62	0.824	3,055,149	5,761
Israel	400	93	0.906	9,197,590	21,640
Lebanon	667	78	0.73	6,820,558	10,230
Libya	4	78	0.708	6,885,460	1,759,540
Luxembourg	242	88	0.909	627,509	2,590
Moldova	105	43	0.711	4,032,473	32,850
Oman	16	87	0.834	5,125,566	309,500
Peru	26	79	0.759	33,041,424	1,280,000
Continued					

Region/Country	Density people/km ²	Urban Pop (%)	HDI	Population	Land area (km ²)
Poland	124	60	0.872	37,840,045	306,230
City of Porto Alegre, RS, Brazil	2837.53	100	0.805	1,488,252	495
Qatar	248	96	0.848	2,807,805	11,610
Romania	84	55	0.816	19,217,049	230,170
City of São Paulo, SP, Brazil	7398.26	100	0.805	12,325,232	1,521
Saudi Arabia	16	84	0.857	34,895,566	2,149,690
Serbia	100	56	0.799	8,731,751	87,460
State of Alagoas	112.23	73.64	0.631	3,351,543	27,843
State of Amapá	4.69	89.81	0.708	861,773	142,471
State of Bahia	24.82	72.07	0.66	14,930,634	564,760
State of Ceará	56.76	75.09	0.682	9,187,103	148,894
State of Espírito Santo	76.25	85.29	0.74	4,064,052	46,074
State of Goiás	17.65	90.29	0.735	7,113,540	340,203
State of Maranhão	19.81	63.07	0.639	7,114,598	329,642
State of Mato Grosso	3.36	81.9	0.725	3,526,220	903,207
State of Mato Grosso do Sul	6.86	85.64	0.729	2,809,394	357,146
State of Minas Gerais	33.41	83.38	0.731	21,292,666	586,521
State of Paraíba	66.7	75.37	0.658	4,039,277	56,467
State of Paraná	52.4	85.31	0.749	11,516,840	199,299
State of Pernambuco	89.63	80.15	0.673	9,616,621	98,068
State of Piauí	12.4	65.77	0.646	3,281,480	251,757
State of Rio de Janeiro	365.23	96.71	0.761	17,264,943	43,750
State of Rio Grande do Norte	59.99	77.82	0.684	3,534,165	52,810
State of Rio Grande do Sul	37.96	85.1	0.746	11,422,973	281,707
State of Rondônia	6.58	73.22	0.69	1,796,460	237,765
State of Santa Catarina	65.27	83.99	0.774	7,252,502	95,731
State of São Paulo	166.23	95.88	0.783	46,289,333	248,219
State of Sergipe	94.35	73.51	0.665	2,318,822	21,925
State of Tocantins	4.98	78.81	0.699	1,590,248	277,467
Turkey	110	76	0.807	84,477,895	769,630
Ukraine	75	69	0.75	43,691,576	579,320
United Arab Emirates	118	86	0.866	9,908,607	83,600
United States of America	36	82	0.92	331,303,997	9,834,000

Table 1. Characteristics of the 87 regions and countries used for comparison in the study. HDI = Human Development Index (the higher, the better).

Comparisons. The *restrictive* analysis between controlled and not controlled areas yielded 33 appropriate comparisons, as shown in Table 2. Only one comparison out of 33 (3%)—State of Roraima (Brazil) versus State of Rondonia (Brazil)—was significant (p -value = 0.04). After correction for residual analysis, it did not pass the autocorrelation test (p -value of the Lagrange Multiplier test = 0.04). (Further details are in Auxiliary Supplementary Material—Restrictive Analysis).

The *global* comparison yielded 3,741 combinations; from these, 184 (4.9%) had a p -value < 0.05, after correcting for False Discovery Rate (Table S1 suppl). After performing the residual analysis, by testing for cointegration between response and covariate, normality of the residuals, presence of residual autocorrelation, homoscedasticity, and functional specification, only 63 (1.6%) of models passed all tests (Table S2—suppl). Closer inspection of several cases where the model did not pass all the tests revealed a common factor: the presence of outliers, mostly due to differences in the epidemiological week in which deaths started to be reported. A heat map showing the comparison between the 87 regions is presented in Fig. 2.

Discussion

We were not able to explain the variation of deaths/million in different regions in the world by social isolation, herein analyzed as differences in staying at home, compared to baseline. In the *restrictive* and *global* comparisons, only 3% and 1.6% of the comparisons were significantly different, respectively. These findings are in accordance with those found by Klein et al.⁴⁶ These authors explain why lockdown was the least probable cause for Sweden's high death rate from COVID-19⁴⁶. Likewise, Chaudry et al. made a country-level exploratory analysis, using a variety of socioeconomic and health-related characteristics, similar to what we have done here, and reported that full lockdowns and wide-spread testing were not associated with COVID-19 mortality per million people⁴⁷. Different from Chaudry et al., in our dataset, after 25 epidemiological weeks, (counting from the 9th epidemiological

Region/country (controlled)	Region/country (not controlled)	Comparability	<i>p</i> Value*
Austria	Serbia	4–4	0.055
Bahrain	City of Porto Alegre, RS, Brazil	4–4	0.911
Belgium	Israel	4–4	0.114
Canada	Australia	4–4	0.965
Czech Republic	State of Alagoas	3–4	0.3501
Denmark	Turkey	3–4	0.911
Finland	State of Goiás	4–4	0.268
City of Fortaleza, CE, Brazil	City of Belo Horizonte, MG, Brazil	4–4	0.301
France	Ukraine	3–4	0.623
Germany	Qatar	3–4	0.892
Greece	Bulgaria	4–4	0.275
Ireland	Croatia	4–4	0.711
Italy	State of São Paulo	3–4	0.928
Japan	Israel	3–4	0.102
Kuwait	Luxembourg	3–4	0.060
City of Manaus, AM, Brazil	Qatar	3–4	0.524
Macedonia	Romania	3–4	0.6169
Netherlands	City of Brasília, Brazil	3–4	0.459
New York City	City of São Paulo, SP, Brazil	3–4	0.645
Norway	Saudi Arabia	3–4	0.379
Portugal	United Arab Emirates	3–4	0.248
Russia	United States of America	3–4	0.557
Slovenia	Poland	4–4	0.875
South Korea	Lebanon	3–4	0.645
Spain	State of Minas Gerais	3–4	0.853
State of Acre	State of Amapá	4–4	0.803
State of Amazonas	Colombia	3–4	0.638
State of Pará	Libya	3–4	0.681
State of Roraima	State of Rondônia	3–4	0.042
Sweden	State of Bahia	4–4	0.131
Switzerland	State of Espírito Santo	3–4	0.745
Tokyo, Japan	City of São Paulo, SP, Brazil	4–4	0.731
United Kingdom	State of Rio Grande do Sul	3–4	0.084

Table 2. Comparisons using the 4-point criteria. Comparability was considered if at least 3 out of 4 of the following conditions were similar: a) population density, b) percentage of the urban population, c) Human Development Index and d) total area of the region. Similarity was considered adequate when a variation in conditions a), b) and c) was within 30%, while, for condition d), a variation of 50% was considered adequate (Further details are in Auxiliary Supplementary Material—4 point criteria). *Linear regression.

week onwards in 2020) we included regions and countries with a "plateau" and a downslope phase in their epidemiological curves. Our findings are in accordance with the dataset of daily confirmed COVID-19 deaths/million in the UK. Pubs, restaurants, and barbershops were open in Ireland on June 29th and masks were not mandatory⁴⁸; after more than 2 months, no spike was observed; indeed, death rates kept falling⁴⁹. Peru has been considered to be the most strict lockdown country in the world³⁰, nevertheless, by September 20th, it had the highest number of deaths/million⁵⁰. Of note, differences were also observed between regions that were considered to be COVID-19 controlled, e.g., Sweden versus Macedonia. Possible explanations for these significant differences may be related to the magnitude of deaths in these countries. After October 2020, when our study was published in a preprint server for Health Sciences, new articles were published with similar results^{51–54}.

Our results are different from those published by Flaxman et al. The authors applied a very complex calculation that NPIs would prevent 3.1 million deaths across 11 European countries⁴⁴. The discrepant results can be explained by different approaches to the data. While Flaxman et al. assumed a constant reproduction number (R_t) to calculate the total number of deaths, which eventually did not occur, we calculated the difference between the actual number of deaths between 2 countries/regions. The projections published by Flaxman et al.⁴⁴ have been disputed by other authors. Kuhbandner and Homburg described the circular logic that this study involved. Flaxman et al. estimated the R_t from daily deaths associated with SARS-CoV-2 using an a priori restriction that R_t may only change on those dates when interventions become effective. However, in the case of a finite population, the effective reproduction number falls automatically and necessarily over time since the number of infections would otherwise diverge⁵⁵. A recent preprint report from Chin et al.⁵⁶ explored the two models proposed by the Imperial College⁴⁴ by expanding the scope to 14 European countries from the 11 countries studied in the

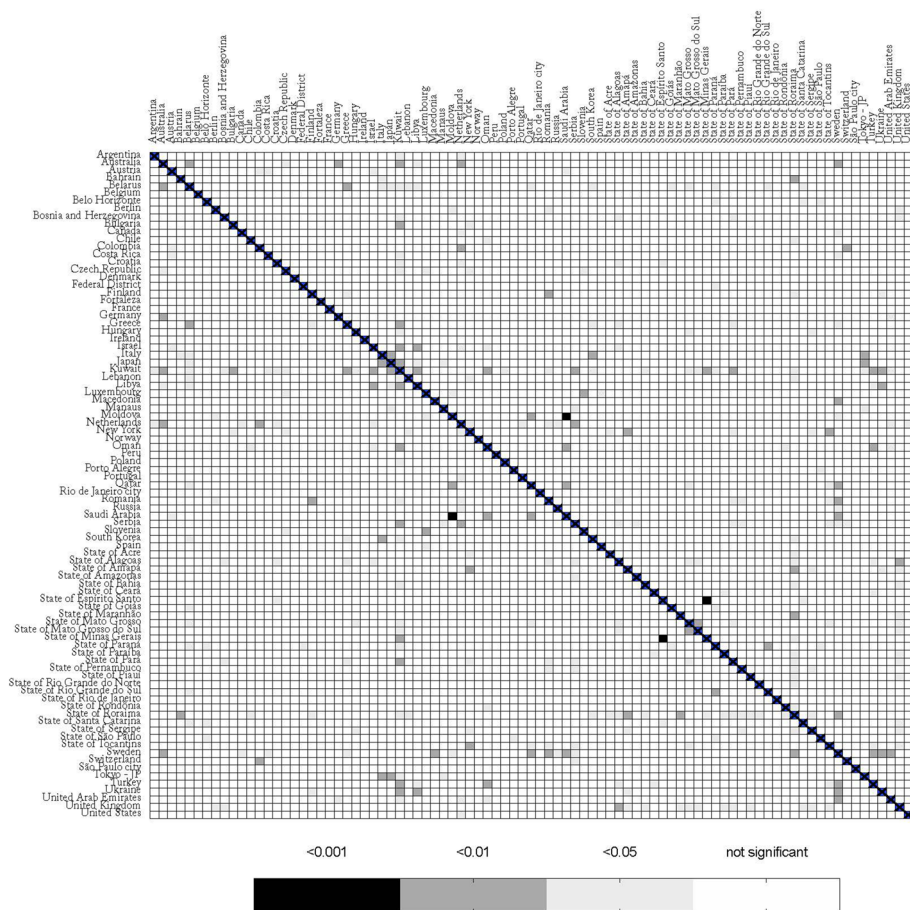


Figure 2. Heat map comparing different regions with COVID-19. The bar below represents p-values for the linear regression.

original paper. They added a third model that considered banning public events as the only covariate. The authors concluded that the claimed benefits of lockdown appear grossly exaggerated since inferences drawn from effects of NPIs are non-robust and highly sensitive to model specification⁵⁶.

The same explanation for the discrepancy can be applied to other publications where mathematical models were created to predict outcomes^{14–18}. Most of these studies dealt with COVID-19 cases^{33,34} and not observed deaths. Despite its limitations, reported deaths are likely to be more reliable than new case data. Further explanations for different results in the literature, besides methodological aspects, could be justified by the complexity of the virus dynamic, by its interaction with the environment, or they may be related to a seasonal pattern that was, by coincidence, established at the same time when infection rates started to decrease due to seasonal dynamics⁵⁷. It is unwise to try to explain a complex and multifactorial condition, with the inherent constant changes, using a single variable. An initial approach would employ a linear regression to verify the influence of one factor over an outcome. Herein we were not able to identify this association. Our study was not designed to explain why the stay-at-home measures do not contain the spread of the virus SARS-CoV-2. However, possible explanations that need further analysis may involve genetic factors⁵⁸, the increment of viral load, and transmission in households and in close quarters where ventilation is reduced.

This study has a few limitations. Different from the established paradigm of randomized clinical trial, this is an ecological study. An ecological study observes findings at the population level and generates hypotheses⁵⁹. Population-level studies play an essential part in defining the most important public health problems to be tackled⁵⁹, which is the case here. Another limitation was the use of Google Community Mobility Reports as a surrogate marker for staying at home. This may underestimate the real value: for instance, if a user’s cell phone is switched off while at home, the observation will be absent from the database. Furthermore, the sample does not represent 100% of the population. This tool, nevertheless, has been used by other authors to demonstrate the efficacy in reducing the number of new cases after NPI^{60,61}. Using different methodologies for measuring mobility may introduce bias and would prevent comparisons between different countries. The number of deaths may be another issue. Death figures may be underestimated, however, *reported deaths* may be more relevant than *new case data*. The arbitrary criteria used for including countries and regions, the *restrictive* comparisons, and our definition of an area as COVID-19 controlled are open for criticism. Nonetheless, these arbitrary criteria were created a priori to the selection of the countries. With these criteria, we expected to obtain representative regions of the world, compare similar regions, and obtain accurate data. By using a HAQI of ≥ 67 , we assumed

that data from these countries would be accurate, reliable, and health conditions were generally good. Nevertheless, the *global* analysis of the regions ($n = 3741$ comparisons) overcame any issue of the *restrictive* comparison. Indeed, the *global* comparison confirmed the results found in the *restrictive* one; only 1.6% of the death rates could be explained by staying at home. Also, our effective sample size in all studies is only 25 epidemiological weeks, which is a very small sample size for a time series regression. The small sample size and the non-stationary nature of COVID-19 data are challenges for statistical models, but our analysis, with 25 epidemiological weeks, is relatively larger than previous publications which used only 7 weeks⁶². A short interval of observation between the introduction of an NPI and the observed effect on death rates yields no sound conclusion, and is a case where the follow-up period is not long enough to capture the outcome, as seen in previous publications^{44,45}. The effects of small samples in this case are related to possible large type II errors and also affect the consistency of the ordinary least square estimates. Nevertheless, given the importance of social isolation promoted by world authorities⁶³, we expected a higher incidence of significant comparisons, even though it could be an ecological fallacy. The low number of significant associations between regions for mortality rate and the percentage of staying at home may be a case of exception fallacy, which is a generalization of individual characteristics applied at the group-level characteristics⁶⁴.

There are strengths to highlight. Inclusion criteria and the Healthcare Access and Quality Index were incorporated. We obtained representative regions throughout the world, including major cities from 4 different continents. Special attention was given to compiling and analyzing the dataset. We also devised a tailored approach to deal with challenges presented by the data. To our knowledge, our modeling approach is unique in pooling information from multiple countries all at once using up-to-date data. Some criteria, such as population density, percentage of urban population, HDI, and HAQI, were established to compare similar regions. Finally, we gave special attention to the residual analysis in the linear regression, an absolutely essential aspect of studies using small samples.

In conclusion, using this methodology and current data, in ~98% of the comparisons using 87 different regions of the world we found no evidence that the number of deaths/million is reduced by staying at home. Regional differences in treatment methods and the natural course of the virus may also be major factors in this pandemic, and further studies are necessary to better understand it.

Methods

Rationale and approach for analyzing the time series data. The proposed approach was tailored to present a way to evaluate the influence of time spent at home and the number of deaths between two countries/regions while avoiding common problems of other models presented in the literature. We focused on detecting the variation of the differences between the number of deaths and how much people followed stay-at-home orders in two regions in each epidemiological week.

For instance, let us consider two similar regions we shall call ‘Stay In county’ and ‘Go Out county’. Both regions started with the same number of cases. After the first 1000 cases were recorded, Stay In county declared that all people should stay at home, while Go Out county allowed people to circulate freely. After a few epidemiological weeks, we examine the data collected on the number of deaths in both counties and how much time people stayed at home by using geolocation software. If the difference between the number of deaths in Stay In county and Go Out county (variable A) is affected by the difference of the percentage of time people stayed at home in these two areas (variable B), then we can consider that the difference in the number of deaths by COVID-19 is influenced by the difference in the percentage of time people stayed at home. Both effects can be detected using linear regression and careful examination of the problem.

Time series on COVID-19 mortality (deaths/millions) display a non-stationary pattern. The daily data present a very distinct seasonal behavior on the weekends, with valleys on Saturdays and Sundays followed by peaks on Mondays (Figure S1). To account for seasonality, one may introduce dummy variables for Saturdays, Sundays, and Mondays, regress the number of deaths in these dummy variables, and then analyze the residuals. However, in most cases, the residuals are still non-stationary, and special treatment would be required in each case. Although this approach may be feasible for a few series, we are interested in analyzing hundreds of time series from different countries and regions. Hence, we need a more efficient way to deal with this amount of data. The covariates present another issue in regressing the daily time series of deaths/staying at home. The covariates are typically correlated with error terms due to public policies adopted by regions/countries. Mechanisms controlling social isolation are intrinsically related to the number of deaths/cases in each location. An increase in the death rate may cause more stringent policies to be adopted, which increases the percentage of people staying at home. This change causes an imbalance between the observed number of deaths and staying at home levels. In a regression model, this discrepancy is accounted for in the error term. Hence, the error term will change in accordance with staying at home levels.

Data aggregation by epidemiological week is a plausible alternative (Figure S2). In this way, artificial seasonality, imposed by work scheduled during weekends and the effect of governmental control over social interaction, in a regression framework, are mitigated. The drawback is that the sample size is significantly reduced from 187 days (Figure S1) to 26 epidemiological weeks (Figure S2).

Aggregation by epidemiological week, however, still yields non-stationary time series in most cases. To overcome this problem, we differentiated each time series. Recall that if Z_t denotes the number of deaths in the t -th epidemiological week, we define the first difference of Z_t as

$$\Delta Z_t = Z_t - Z_{t-1}$$

Intuitively, ΔZ_t denotes the variation of deaths between weeks t and $t-1$, also known as the flux of deaths. The same is valid for the staying at home time series. This simple operation yielded, in most cases, stationary

time series, verified with the so-called Phillips-Perron stationarity test⁶⁵. In the few cases where the resulting time series did not reject the null hypothesis of non-stationarity (technically, the existence of a unitary root, in the time series characteristic polynomial), this was due to the presence of one or two outliers combined with the small sample size. These outliers were usually related to the very low incidence of COVID-19 deaths by the 9th epidemiological week when paired with countries with a significant number of deaths in that same week, thus resulting in an outlier which cannot be accounted for by linear regression.

To investigate pairwise behavior, we propose a method to assess the relationship between deaths and staying at home data between various countries and regions. For two countries/regions, say A and B, let Y_t^A and Y_t^B denote the number of deaths per million at epidemiological week t for country A and B respectively, while X_t^A and X_t^B denote the staying at home at epidemiological week t for A and B, respectively. The idea is to regress the difference $\Delta Y_t^A - \Delta Y_t^B = \Delta(Y_t^A - Y_t^B)$ on $\Delta X_t^A - \Delta X_t^B = \Delta(X_t^A - X_t^B)$. Formally, we perform the regression

$$\Delta(Y_t^A - Y_t^B) = \beta_0 + \beta_1 \Delta(X_t^A - X_t^B) + \varepsilon_t,$$

where β_0 and β_1 are unknown coefficients and ε_t denotes an error term. Estimation of β_0 and β_1 is carried out through ordinary least squares. The interpretation of the model is important. We are regressing the difference in the variation of deaths between locations A and B into the difference in the variation of staying at home values between the same location.

If the number of deaths in locations A and B have a similar functional behavior over time, then $Y_t^A - Y_t^B$ tends to be near-constant, and $\Delta(Y_t^A - Y_t^B)$ tends to oscillate around zero. If the same applies to $\Delta(X_t^A - X_t^B)$, then we expect $\beta_1 \neq 0$; consequently, we conclude that the behavior, between A and B, is similar and the number of deaths and the percentage of staying at home are associated in these regions. The other non-spurious situation implying $\beta_1 \neq 0$ occurs when the variation in the number of deaths in locations A and B increases/decreases over time following a certain pattern, while the variation in the percentage of “staying at home” values also increases/decreases following the same pattern (apart from the direction). In this situation, we found different epidemiological patterns as in the variation in the number of deaths, and in the staying at home values, in locations A and B were on opposite trends. However, if these patterns were similar (proportional), this would be captured in the difference and, as a consequence, in the regression. This means that the different trends were near proportional and, hence, the variation in staying at home is associated with the variation in deaths.

In the section below “Definition of areas with and without controlled cases of COVID-19”, each country/region was classified into a binary class: either controlled or not controlled areas for COVID-19. The proposed method allows for insights regarding the association of the number of deaths and staying at home levels between countries/regions with similar/different degrees of COVID-19 control. Assumptions related to consistency, efficiency, and asymptotic normality of the ordinary least squares, in the context of time series regression, can be found in⁶⁶. Since we are comparing many time series, to avoid any problem with spurious regression, we performed a cointegration test between the response and covariates. In this context, this is equivalent to testing the stationarity of ε_t , which was done by performing the Phillips-Perron test. Residual analysis is of utmost importance in linear regression, especially in the context of small samples. The steps and tests performed in the residual analysis are described in the statistical analysis section.

Study design. This is an ecological study using data available on the Internet.

Setting—data collection on mobility. Google COVID-19 Community Mobility Reports³¹ provided data on mobility from 138 countries^{67,68} and regions between February 15th and August 21st, 2020. Data regarding the average times spent at home was generated in comparison to the baseline. Baseline was considered to be the median value from between January 3rd and February 6th, 2020. Data obtained between February 15th and August 21st 2020 was divided into epidemiological weeks (epi-weeks) and the mean percentage of time spent staying at home per week was obtained.

Data collection on mortality. Numbers of daily deaths from selected regions were obtained from open databases^{67,68} on August 27st, 2020.

Inclusion criteria for analysis. Only regions with mobility data and with more than 100 deaths, by August 26th, 2020, were included in this study. This criteria has been chosen since the majority of epidemiological studies start when 100 cases are reached^{69,70}. For data quality, only countries with Healthcare Access and Quality Index (HAQI) of ≥ 67 ⁷¹ were included. The HAQI has been divided into 10 subgroups. The median class is 63.4–69.7. The average in this median class is 66.55 (rounding up to 67). By choosing a HAQI of ≥ 67 , we assumed that data from these countries were reliable and healthcare was of high quality. For Brazilian regions, a HAQI was substituted for the Human Development Index (HDI), and those with < 0.549 (low) were excluded.

Three major cities with > 100 deaths and well-established results (Tokyo, Japan; Berlin, Germany, and New York, USA) were selected as controlled areas.

Dataset of COVID-19 cases and associated data to reduce bias. After inclusion of the countries/regions, further data were obtained to reduce comparison bias, including population density (people/km²), percentage of the urban population, HDI, and the total area of the region in square kilometers. All data were obtained from open databases^{72–74}.

Definition of areas with and without controlled cases of COVID-19. Regions were classified as controlled for cases of COVID-19 if they present at least 2 out of the 3 following conditions: **a)** type of transmission classified as “clusters of cases”, **b)** a downward curve of newly reported deaths in the last 7 days, and **c)** a flat curve in the cumulative total number of deaths in the last 7 days (variation of 5%) according to the World Health Organization⁷⁵. An example is shown in Figure S3.

Data from the cities (Tokyo, Berlin, New York, Fortaleza, Belo Horizonte, Manaus, Rio de Janeiro, São Paulo, and Porto Alegre) were obtained from official government sites^{76–79}. Tokyo, Berlin and New York were chosen for having controlled the COVID-19 dissemination, for representing 3 different continents, and for similarity to major Brazilian cities (Fortaleza, Belo Horizonte, Manaus, Rio de Janeiro, São Paulo, and Porto Alegre).

Merged database. Different databases from the sites mentioned above were merged using Microsoft Excel Power Query (Microsoft Office 2010 for Windows Version 14.0.7232.5000) and manually inspected for consistency.

Processing the data—cleaning. Data collected from multiple regions were processed using Python 3.7.3 in the Jupyter Notebook⁸⁰ environment through the use of the Python Data Analysis Library in Google Colab Research⁸¹. Details of preprocessing are described in Python script (Supplement). Briefly, after taking the sum of deaths/million per epi-week, and the average of the variable “staying at home” per epi-week, non-stationary patterns were mitigated by subtracting $week_t$ by $week_{t-1}$.

Time series data setup and variables. Details regarding the pre-processing and methodological details were presented on the *Approach for analyzing the time series data* section. Our variables were the difference in the variation of deaths between locations A and B (dependent variable—outcome), and the difference in the variation of staying at home values between the same location (independent variable).

Comparison between areas. Direct comparison, between regions with and without controlled COVID-19 cases, was considered in two scenarios: 1) *Restrictive* if, at least 3 out of 4 of the following conditions were similar: a) population density, b) percentage of the urban population, c) HDI and d) total area of the region. Similarity was considered adequate when a variation in conditions a), b), and c) was within 30%, while, for condition d), a variation of 50% was considered adequate. 2) *Global*: all regions and countries were compared to each other.

The restrictive comparison used parameters related to how close people may have made physical contact. The major route of transmission for COVID-19 is from person-to-person via respiratory droplets and direct personal and physical contact within a community setting^{82,83}.

Statistical analysis. After data preprocessing, the association between the number of deaths and staying at home was verified using a linear regression approach. Data were analyzed using the Python model statsmodels.api v0.12.0 (statsmodels.regression.linear_model.OLS; statsmodels.org), and double-checked using R version 3.6.1⁸⁴. False Discovery Rate proposed by Benjamini-Hochberg (FDR-BH) was used for multiple testing⁸⁵.

We checked the residuals for heteroskedasticity using White’s test⁸⁶; for the presence of autocorrelation using the Lagrange Multiplier test⁸⁷; for normality using the Shapiro-Wilk’s normality test⁸⁸; and for functional specification using the Ramsey’s RESET test⁸⁹. All tests were performed with a 5% significance level and the analysis was performed with R version 3.6.1⁸⁴.

Data from 30 *restrictive* comparisons were manually inspected and checked a third time using Microsoft Excel (Microsoft). A heat map was designed using GraphPad Prism version 8.4.3 for Mac (GraphPad Software, San Diego, California, USA). Graphs plotting the number of deaths/million and staying at home over epidemiological weeks were obtained from Google Sheets⁹⁰.

Data Availability

The Python and R scripts are available at <https://gist.github.com/rsavaris66/eccfc6caf4c9578d676c134fac74d3fe>. Auxiliary Supplementary Material data is available at this link. (<https://docs.google.com/spreadsheets/d/1itCPJLWCXORYDTxBY0M21VJf7PEyS4B0K00lOoNpqrA/edit?usp=sharing>).

Received: 17 November 2020; Accepted: 1 February 2021

Published online: 05 March 2021

References

1. COVID-19 Virus Pandemic - Worldometer. *Worldometers* <https://www.worldometers.info/coronavirus/#countries>.
2. Huang, W.-T. & Chen, Y.-Y. The war against the coronavirus disease (COVID-2019): keys to successfully defending Taiwan. *Hu Li Za Zhi* **67**, 75–83 (2020).
3. Wu, E. & Qi, D. Masks and thermometers: paramount measures to stop the rapid spread of SARS-CoV-2 in the United States. *Genes Dis* <https://doi.org/10.1016/j.gendis.2020.04.011> (2020).
4. Lin, C. *et al.* Policy decisions and use of information technology to fight COVID-19 Taiwan. *Emerg. Infect. Dis.* **26**, 1506–1512 (2020).
5. Guest, J. L., Del Rio, C. & Sanchez, T. The three steps needed to end the COVID-19 pandemic: bold public health leadership, rapid innovations, and courageous political will. *JMIR Public Health Surveill* **6**, e19043 (2020).
6. WHO Director-General’s opening remarks at the media briefing on COVID-19 - 13 April 2020. <https://www.who.int/dg/speeches/detail/who-director-general-s-opening-remarks-at-the-media-briefing-on-covid-19--13-april-2020>.
7. Coronavirus disease (COVID-19): Herd immunity, lockdowns and COVID-19. <https://www.who.int/news-room/q-a-detail/herd-immunity-lockdowns-and-covid-19>.

8. Mucientes, E. & Carrasco, A. Covid-19[Un juez de Lleida avala ahora las medidas de confinamiento en Segrià. *ELMUNDO* <https://www.elmundo.es/ciencia-y-salud/salud/2020/07/14/5f0d542cfdff7d0a8b460c.html> (2020).
9. Governor Cuomo Signs the 'New York State on PAUSE' Executive Order. *Governor Andrew M. Cuomo* <https://www.governor.ny.gov/news/governor-cuomo-signs-new-york-state-pause-executive-order> (2020).
10. Ministry of Housing, Communities & Local Government. Government advice on home moving during the coronavirus (COVID-19) outbreak. (2020).
11. Criativo, A. #stayathome. #stayathome <https://www.stayathome.world/>.
12. A Movement to Stop the COVID-19 Pandemic | #StayTheFuckHome. #StayTheFuckHome <https://staythefuckhome.com/>.
13. #[stayathome] (Brazilian twitter). *Twitter* <https://twitter.com/hashtag/ficaemcasa>.
14. Ibarra-Vega, D. Lockdown, one, two, none, or smart. Modeling containing covid-19 infection. A conceptual model. *Sci. Total Environ.* **730**, 138917 (2020).
15. Ambikapathy, B. & Krishnamurthy, K. Mathematical modelling to assess the impact of lockdown on COVID-19 transmission in India: model development and validation. *JMIR Public Health Surveill* **6**, e19368 (2020).
16. Sjödin, H., Wilder-Smith, A., Osman, S., Farooq, Z. & Rocklöv, J. Only strict quarantine measures can curb the coronavirus disease (COVID-19) outbreak in Italy, 2020. *Euro Surveill.* **25**, (2020).
17. Nussbaumer-Streit, B. *et al.* Quarantine alone or in combination with other public health measures to control COVID-19: a rapid review. *Cochrane Database Syst. Rev.* **4**, CD013574 (2020).
18. Liu, Z. *et al.* Modeling the trend of coronavirus disease 2019 and restoration of operational capability of metropolitan medical service in China: a machine learning and mathematical model-based analysis. *Glob Health Res Policy* **5**, 20 (2020).
19. Espinoza, B., Castillo-Chavez, C. & Perrings, C. Mobility restrictions for the control of epidemics: when do they work?. *PLoS ONE* **15**, e0235731 (2020).
20. Ferguson, N., Nedjati Gilani, G. & Laydon, D. COVID-19 CovidSim microsimulation model. www.imperial.ac.uk. <https://spira.limperial.ac.uk/handle/10044/1/79647> (2020).
21. Semenova, Y. *et al.* Epidemiological characteristics and forecast of COVID-19 outbreak in the Republic of Kazakhstan. *J. Korean Med. Sci.* **35**, e227 (2020).
22. Peixoto, P. S., Marcondes, D., Peixoto, C. & Oliva, S. M. Modeling future spread of infections via mobile geolocation data and population dynamics. An application to COVID-19 in Brazil. *PLoS One* **15**, e0235732 (2020).
23. Aquino, E. M. L. *et al.* Social distancing measures to control the COVID-19 pandemic: potential impacts and challenges in Brazil. *Cien. Saude Colet.* **25**, 2423–2446 (2020).
24. Atalan, A. Is the lockdown important to prevent the COVID-9 pandemic? Effects on psychology, environment and economy-perspective. *Ann. Med. Surg. (Lond)* **56**, 38–42 (2020).
25. Imprensa Nacional. LEI Nº 13.979, DE 6 DE FEVEREIRO DE 2020 - LEI Nº 13.979, DE 6 DE FEVEREIRO DE 2020 - DOU - Imprensa Nacional. <https://www.in.gov.br/en/web/dou/-/lei-n-13.979-de-6-de-fevereiro-de-2020-242078735>.
26. Decreto 46970. www.fazenda.rj.gov.br http://www.fazenda.rj.gov.br/sefaz/content/conn/UCMServer/path/Contribution%20Foldeiros/site_fazenda/Subportais/PortalGestaoPessoas/Legisla%C3%A7%C3%B5es%20SILEP/Legisla%C3%A7%C3%B5es/2020/Decretos/DECRETO%20N%C2%BA%2046.970%20DE%2013%20DE%20MAR%C3%87O%20DE%202020_MEDIDAS%20TEMPOR%C3%81RIAS%20PREVEN%C3%87%C3%83O%20CORONAV%C3%8DRUS.pdf?lve.
27. Decreto 40520 de 14/03/2020. http://www.sinj.df.gov.br/sinj/Norma/ed3d931f353d4503bd35b9b34fe747f2/Decreto_40520_14_03_2020.html.
28. Decreto 59283 2020 de São Paulo SP. <https://leismunicipais.com.br/a/sp/s/sao-paulo/decreto/2020/5929/59283/decreto-n-59283-2020-declara-situacao-de-emergencia-no-municipio-de-sao-paulo-e-definemas-medidas-para-o-enfrentamento-da-pandemia-decorrente-do-coronavirus>.
29. Decreto 55240 de 10 de maio de 2020. <https://www.pge.rs.gov.br/upload/arquivos/202009/02110103-decreto-55240.pdf>.
30. Tegel, S. The country with the world's strictest lockdown is now the worst for excess deaths. *The Telegraph* <https://www.telegraph.co.uk/travel/destinations/south-america/peru/articles/peru-strict-lockdown-excess-deaths/> (2020).
31. Google LLC. Google COVID-19 Community Mobility Reports.
32. Badr, H. S. *et al.* Association between mobility patterns and COVID-19 transmission in the USA: a mathematical modelling study. *Lancet Infect. Dis.* [https://doi.org/10.1016/S1473-3099\(20\)30553-3](https://doi.org/10.1016/S1473-3099(20)30553-3) (2020).
33. Banerjee, T. & Nayak, A. U. S. U. S. County level analysis to determine If social distancing slowed the spread of COVID-19. *Rev. Panam. Salud Publica* **44**, e90 (2020).
34. Wang, Y., Liu, Y., Struthers, J. & Lian, M. Spatiotemporal characteristics of COVID-19 epidemic in the United States. *Clin. Infect. Dis.* <https://doi.org/10.1093/cid/ciaa934> (2020).
35. Gao, S. *et al.* Association of mobile phone location data indications of travel and stay-at-home mandates with COVID-19 infection rates in the US. *JAMA Netw Open* **3**, e2020485 (2020).
36. Candido, D. S. *et al.* Evolution and epidemic spread of SARS-CoV-2 in Brazil. *Science* <https://doi.org/10.1126/science.abd2161> (2020).
37. Islam, N. *et al.* Physical distancing interventions and incidence of coronavirus disease 2019: natural experiment in 149 countries. *BMJ* **370**, (2020).
38. Bernal, J. L., Cummins, S. & Gasparrini, A. Interrupted time series regression for the evaluation of public health interventions: a tutorial. *Int. J. Epidemiol.* **46**, 348–355 (2017).
39. Nason, G. P. Stationary and non-stationary time series. in *Statistics in Volcanology* (eds. Mader, H. M., Coles, S. G., Connor, C. B. & Connor, L. J.) 129–142 (The Geological Society of London on behalf of The International Association of Volcanology and Chemistry of the Earth's Interior, 2006).
40. Sen, B. P., Padalabalanarayanan, S. & Hanumanthu, V. S. Stay-at-home orders, African American population, poverty and state-level Covid-19 infections: are there associations? *Public and Global Health* (2020).
41. Li, R. *et al.* Substantial undocumented infection facilitates the rapid dissemination of novel coronavirus (COVID-19). *medRxiv* (2020) doi:<https://doi.org/10.1101/2020.02.14.20023127>.
42. Zamir, M. *et al.* Non pharmaceutical interventions for optimal control of COVID-19. *Comput. Methods Programs Biomed.* **196**, 105642 (2020).
43. Boretti, A. After less than 2 months, the simulations that drove the world to strict lockdown appear to be wrong, the same of the policies they generated. *Health Serv. Res. Manag. Epidemiol.* **7**, 2333392820932324 (2020).
44. Flaxman, S. *et al.* Estimating the effects of non-pharmaceutical interventions on COVID-19 in Europe. *Nature* **584**, 257–261 (2020).
45. Dhenning, J. *et al.* Inferring change points in the spread of COVID-19 reveals the effectiveness of interventions. *Science* **369**, (2020).
46. Klein, D. B., Book, J. & Bjørnskov, C. 16 Possible factors for Sweden's High COVID death rate among the nordics. *SSRN Electron. J.* doi:<https://doi.org/10.2139/ssrn.3674138>.
47. Chaudhry, R., Dranitsaris, G., Mubashir, T., Bartoszko, J. & Riazi, S. A country level analysis measuring the impact of government actions, country preparedness and socioeconomic factors on COVID-19 mortality and related health outcomes. *EClinicalMedicine* **25**, 100464 (2020).
48. Therese, M. M. Government confirms that it is safe to proceed to Phase 3 of the Roadmap for Reopening Business and Society. (2020).

49. Daily confirmed COVID-19 deaths per million, rolling 7-day average. <https://ourworldindata.org/grapher/daily-covid-deaths-per-million-7-day-average>.
50. Coronavirus Update (Live): 31,036,957 Cases and 962,339 Deaths from COVID-19 Virus Pandemic - Worldometer. <https://www.worldometers.info/coronavirus/#countries>.
51. De Laroche Lambert, Q., Marc, A., Antero, J., Le Bourg, E. & Toussaint, J.-F. Covid-19 mortality: a matter of vulnerability among nations facing limited margins of adaptation. *Front Public Health* **8**, 604339 (2020).
52. Leffler, C. T. *et al.* Association of country-wide coronavirus mortality with demographics, testing, lockdowns, and public wearing of masks. *Am. J. Trop. Med. Hyg.* **103**, 2400–2411 (2020).
53. Wieland, T. A phenomenological approach to assessing the effectiveness of COVID-19 related nonpharmaceutical interventions in Germany. *Saf. Sci.* **131**, 104924 (2020).
54. Kepp, K. P. & Bjørnskov, C. Lockdown Effects on Sars-CoV-2 Transmission – The evidence from Northern Jutland. *medRxiv* 2020.12.28.20248936 (2021).
55. Kuhbandner, C. & Homburg, S. Commentary: estimating the effects of non-pharmaceutical interventions on COVID-19 in Europe. *Front. Med.* **7**, (2020).
56. Chin, V., Ioannidis, J. P. A., Tanner, M. A. & Cripps, S. Effects of non-pharmaceutical interventions on COVID-19: a tale of three models. *medRxiv* 2020.07.22.20160341 (2020).
57. Park, S., Lee, Y., Michelow, I. C. & Choe, Y. J. Global seasonality of human coronaviruses: a systematic review. *Open Forum Infect Dis* **7**, (2020).
58. Trougakos, I. P. *et al.* Insights to SARS-CoV-2 life cycle, pathophysiology, and rationalized treatments that target COVID-19 clinical complications. *J. Biomed. Sci.* **28**, 9 (2021).
59. Pearce, N. The ecological fallacy strikes back. *J. Epidemiol. Community Health* **54**, 326–327 (2000).
60. Delen, D., Eryarsoy, E. & Davazdahemami, B. No place like home: cross-national data analysis of the efficacy of social distancing during the COVID-19 pandemic. *JMIR Public Health Surveill* **6**, e19862 (2020).
61. Vokó, Z. & Pitter, J. G. The effect of social distance measures on COVID-19 epidemics in Europe: an interrupted time series analysis. *Geroscience* **42**, 1075–1082 (2020).
62. Ghosal, S., Bhattacharyya, R. & Majumder, M. Impact of complete lockdown on total infection and death rates: a hierarchical cluster analysis. *Diabetes Metab. Syndr.* **14**, 707–711 (2020).
63. COVID-19 advice - Physical distancing. <https://www.who.int/westernpacific/emergencies/covid-19/information/physical-distancing>.
64. Miller, R. L. & Brewer, J. D. *The A-Z of social research: a dictionary of key social science research concepts*. (SAGE, 2003).
65. Perron, P. Trends and random walks in macroeconomic time series. *J. Econ. Dyn. Control* **12**, 297–332 (1988).
66. Greene, W. H. *Econometric Analysis*. (2012).
67. Coronavirus Brasil. <https://covid.saude.gov.br/>.
68. Coronavirus Source Data. *Our World in Data* <https://ourworldindata.org/coronavirus-source-data>.
69. Lai, C. K. C. *et al.* Epidemiological characteristics of the first 100 cases of coronavirus disease 2019 (COVID-19) in Hong Kong Special Administrative Region, China, a city with a stringent containment policy. *Int. J. Epidemiol.* **49**, 1096–1105 (2020).
70. Tsou, T.-P., Chen, W.-C., Huang, A. S.-E., Chang, S.-C. & Taiwan COVID-19 outbreak investigation team. Epidemiology of the first 100 cases of COVID-19 in Taiwan and its implications on outbreak control. *J. Formos. Med. Assoc.* **119**, 1601–1607 (2020).
71. Barber, R. M. *et al.* Healthcare access and quality index based on mortality from causes amenable to personal health care in 195 countries and territories, 1990–2015: a novel analysis from the Global Burden of Disease Study 2015. *Lancet* **390**, 231–266 (2017).
72. 2019 Human Development Index Ranking. <http://hdr.undp.org/en/content/2019-human-development-index-ranking>.
73. [Cities and States Statistics]. *Instituto Brasileiro de Geografia e Estatística* <https://www.ibge.gov.br/cidades-e-estados>.
74. Population by Country (2020) - Worldometer. <https://www.worldometers.info/world-population/population-by-country/>.
75. WHO Coronavirus Disease (COVID-19) Dashboard. *World Health Organization* <https://covid19.who.int/table>.
76. Population of Tokyo - Tokyo Metropolitan Government. <https://www.metro.tokyo.lg.jp/ENGLISH/ABOUT/HISTORY/history03.htm#:~:text=With%20a%20population%20density%20of,average%201.94%20per%20household>.
77. Berlin. https://www.citypopulation.de/en/germany/berlin/berlin/11000000__berlin/.
78. COVID-19:Data. *nychealth/coronavirus-data* <https://github.com/nychealth/coronavirus-data>.
79. Planning-Population-Census 2010-DCP. <https://www1.nyc.gov/site/planning/planning-level/nyc-population/census-2010.page>.
80. Project Jupyter. <https://www.jupyter.org>.
81. Bisong, E. Google Colaboratory. in *Building Machine Learning and Deep Learning Models on Google Cloud Platform* (ed. Bisong, E.) 59–64 (Apress, 2019).
82. Transmission of SARS-CoV-2: implications for infection prevention precautions. <https://www.who.int/news-room/commentaries/detail/transmission-of-sars-cov-2-implications-for-infection-prevention-precautions#:~:text=Current%20evidence%20suggests%20that%20transmission,%2C%20talks%20or%20sings>.
83. Severe acute respiratory syndrome coronavirus 2 (SARS-CoV-2) and coronavirus disease-2019 (COVID-19): The epidemic and the challenges. *Int. J. Antimicrob. Agents* **55**, 105924 (2020).
84. The R Foundation for Statistical Computing, Vienna, Austria. The R Project for Statistical Computing. *The R Foundation* <https://www.R-project.org/>.
85. Benjamini, Y. & Hochberg, Y. On the adaptive control of the false discovery rate in multiple testing with independent statistics. *J. Educ. Behav. Stat.* **25**, 60 (2000).
86. White, H. A heteroskedasticity-consistent covariance matrix estimator and a direct test for heteroskedasticity. *Econometrica* **48**, 817 (1980).
87. Evans, G. & Patterson, K. D. The lagrange multiplier test for autocorrelation in the presence of linear restrictions. *Econ. Lett.* **17**, 237–241 (1985).
88. Shapiro, S. S. & Wilk, M. B. An analysis of variance test for normality (complete samples). *Biometrika* **52**, 591–611 (1965).
89. Ramsey, J. B. Tests for specification errors in classical linear least-squares regression analysis. *J. Roy. Stat. Soc.: Ser. B (Methodol.)* **31**, 350–371 (1969).
90. Google LLC. *Google Google LLC*. G Suite [Internet]. 2020. Available from: <https://gsuite.google.com>.

Acknowledgements

We are grateful to Dr. Jair Ferreira, from the Epidemiology Department of the Universidade Federal do Rio Grande do Sul, for his critical feedback.

Author contributions

R.F.S. was responsible for the conception of the study, designed the methodology, tested code components in Python and R, verified reproducibility, made formal analysis, data collection, provided other analysis tools, was responsible for data curation, wrote the initial draft, interpreted the data, reviewed the manuscript, created the data presentation, oversight execution, coordinate execution of the project. G.P. conceived the project, designed

the methodology, implemented the computer code and algorithm in R, verified the outputs, conceived and formalized the statistical model applied, wrote the original draft and interpreted the data. R.K. participated in the conception of the study, implemented computer code in Python, validated results, provided computer resources, maintained research data for initial use, critically reviewed the initial draft, reviewed final draft, was the external mentor to the core team and coordinated the planning of the project. J.D., programmed the algorithms in Python, provided techniques to reduce data dimensionality, maintained software code in Python, reviewed and approved the final draft.

Competing interests

The authors declare no competing interests.

Additional information

Supplementary Information The online version contains supplementary material available at <https://doi.org/10.1038/s41598-021-84092-1>.

Correspondence and requests for materials should be addressed to R.F.S.

Reprints and permissions information is available at www.nature.com/reprints.

Publisher's note Springer Nature remains neutral with regard to jurisdictional claims in published maps and institutional affiliations.



Open Access This article is licensed under a Creative Commons Attribution 4.0 International License, which permits use, sharing, adaptation, distribution and reproduction in any medium or format, as long as you give appropriate credit to the original author(s) and the source, provide a link to the Creative Commons licence, and indicate if changes were made. The images or other third party material in this article are included in the article's Creative Commons licence, unless indicated otherwise in a credit line to the material. If material is not included in the article's Creative Commons licence and your intended use is not permitted by statutory regulation or exceeds the permitted use, you will need to obtain permission directly from the copyright holder. To view a copy of this licence, visit <http://creativecommons.org/licenses/by/4.0/>.

© The Author(s) 2021